

DV 314

Pneumatic Suck Back Valve



The DV314 Pneumatic suck back valve is a control valve for precise dosage and supply of liquid medicine. At the moment when the valve is cut off, the function of the siphon chamber ensures that the medium stops after the valve is closed, so that the medium capacity flowing through the valve is consistent with the action of the valve closing command, so as to obtain an accurate supply amount. The suction valve has a single chamber and a double chamber structure, which can meet the requirements of different spatial and functional applications.

Easy installation and maintenance

- * Multiple functional combinations
- * Compact design, easy installation, no maintenance
- * Integrated type suck back can be adjusted
- * Double seat type suck back, flow can be adjustable control
- * Mounting plate can be flanged and backmounted

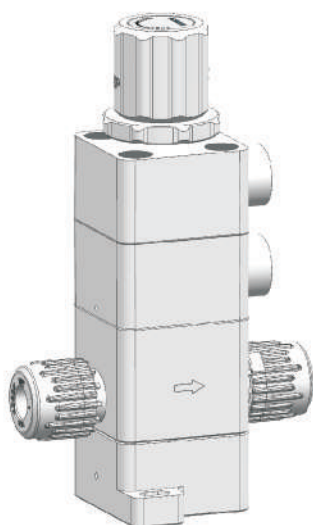
High safety performance

- * Complies with FDA 177-1520 / 177-1550 dissolution testing requirements
- * Ultra-pure products comply with SEMI F057 standards
- * The PTFE diaphragm has a low Particulate characteristic

High Flexibility

- * Wetted material PTFE, PFA
- * Diaphragm material PTFE
- * Nut material PVDF or PFA
- * Seal kit FKM/EPDM optional
- * Structure material PVDF or PP-Natural
- * Provide customized services





Performance data

Item	Unit	Data
Service pressure	bar	0...5,0
Backpressure	bar	0
NC/NO control pressure	kgf/cm ²	4,0...5,0
DA control pressure	kgf/cm ²	3,0...4,0
Leakage rate	cm ³ /min	0 (Based on water pressure)
Siphon capacity	cm ³	0,18...0,55
Operating temperature	°C	5...90
Ambient temperature	°C	0...60
Material	Valve body	PFA / PTFE
	Diaphragm	PTFE
	Actuating element	PVDF / PPN
	Baseplate	PVDF
	Bolt	SUS Coating

Product code

Size (Inch)	PFA		PTFE		Siphon capacity (cm ³)
	Ration	Adjustable	Ration	Adjustable	
Integrated suck back					
1/8			314.8602403	314.8612403	0.18
1/4			314.8602406	314.8612406	0.18
3/8			314.8602410	314.8612410	0.50
1/2			314.8602412	314.8612412	0.50

Function Description

Flntegrated suck back valve, used to cut off the back of the valve after the liquid suction, to prevent dripping.

① Valve position:

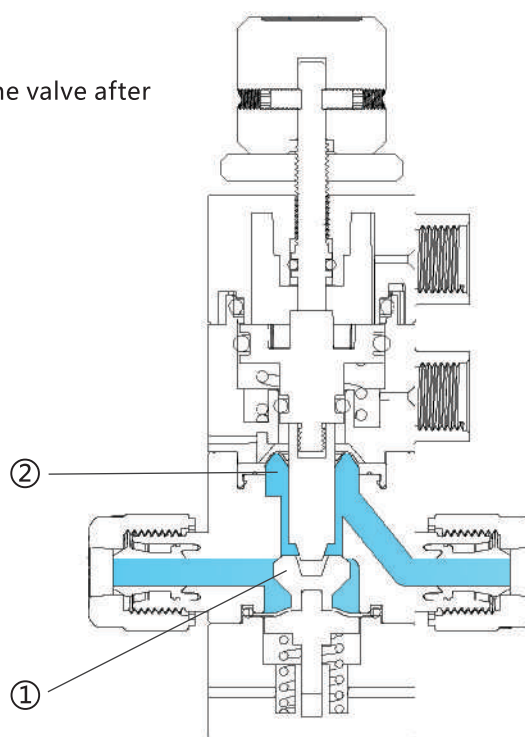
Pneumatic on-off function

② Valve position:

Valve chamber negative pressure siphon function

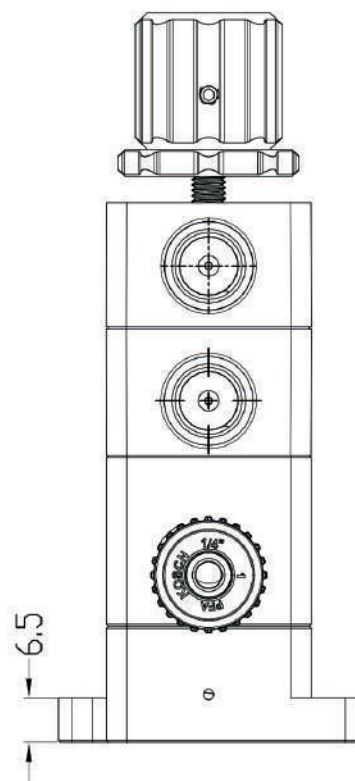
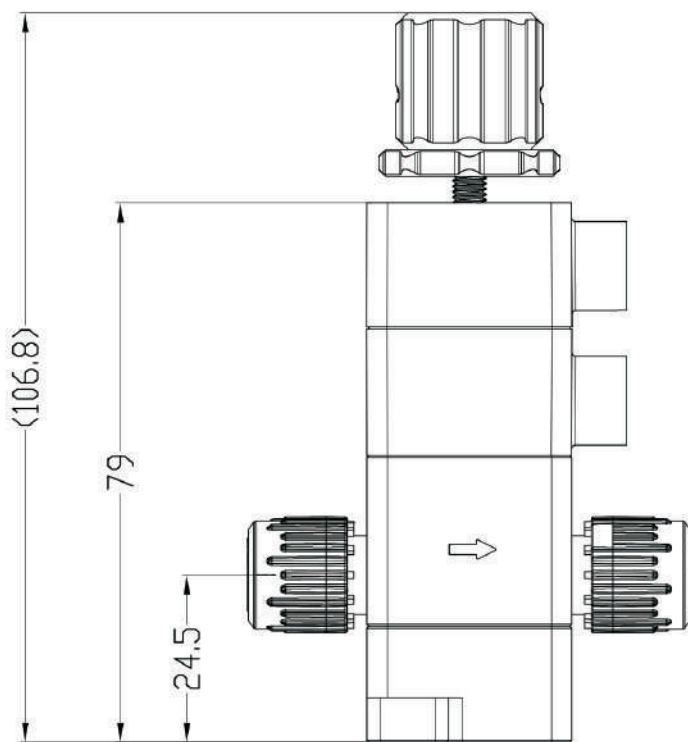
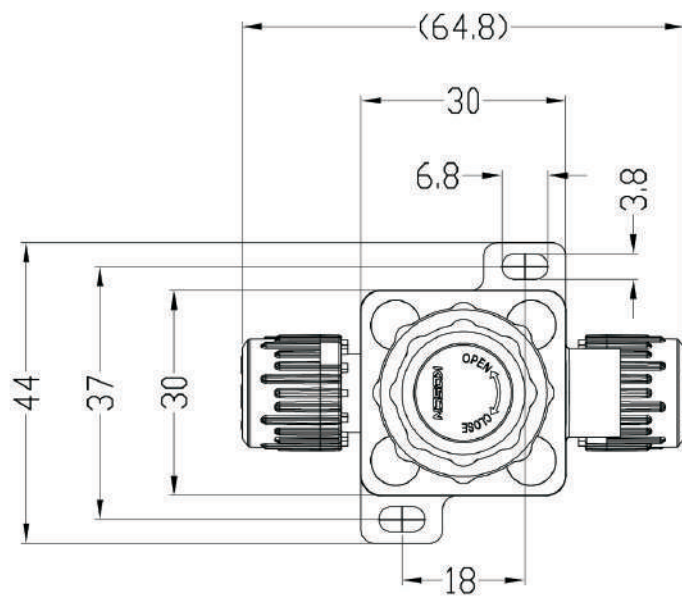
The siphon volume can be adjusted manually

Size	CV
1/8	0.10
1/4	0.25
3/8	0.30
1/2	0.65

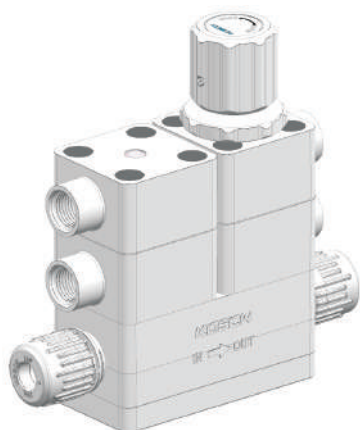


1/4 Size

* More specifications can be obtained from the factory or agent for 3D model drawings



DV314 , Double seat SUCK BACK VALVES



Performance data

Item	Unit	Data
Service pressure	bar	0...5,0
Backpressure	bar	0...5,0
NC/NO control pressure	kgf/cm ²	4,0...5,0
DA control pressure	kgf/cm ²	3,0...4,0
Leakage rate	cm ³ /min	0 (Based on water pressure)
Siphon capacity	cm ³	0,12...0,55
Operating temperature	°C	5...100
Ambient temperature	°C	0...60
Material	Valve body	PFA / PTFE
	Diaphragm	PTFE
	Actuating element	PVDF / PPN
	Baseplate	PVDF
	Bolt	SUS Coating

Product code

Size (Inch)	PFA		PTFE		Siphon capacity (cm ³)
	NC+NC	NC+NO	NC+NC	NC+NO	
Double seat					
1/4 Double regulate	314.7682406	314.7642406			0.12
1/4 Single regulate	314.7672406	314.7632406			0.12
3/8 Double regulate			314.8680410	314.8640410	0.55
3/8 Single regulate			314.8670410	314.8630410	0.55
1/2 Double regulate			314.8680412	314.8640412	0.55
1/2 Single regulate			314.8670412	314.8630412	0.55

Function Description

For siphoning the liquid behind the valve after the valve is closed

① Valve position:

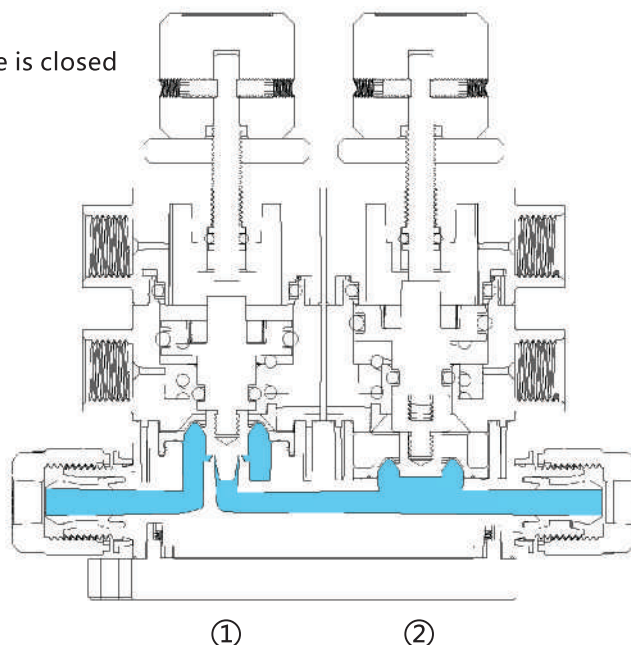
Pneumatic on-off function

Valve opening adjustment is optional

② Valve position:

Valve chamber negative pressure siphon function

The siphon volume can be adjusted manually

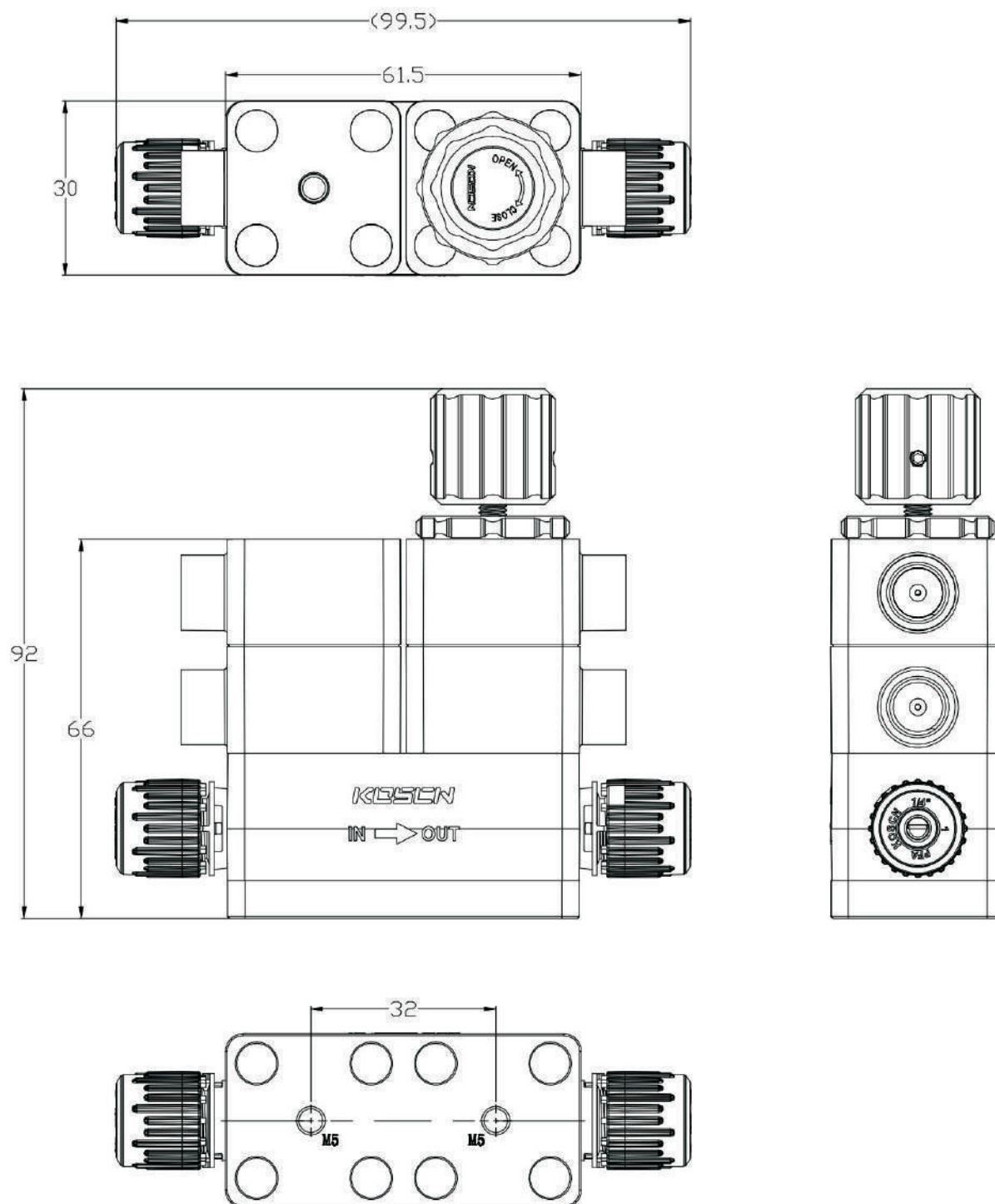


Size	CV
1/8	0.10
1/4	0.35
3/8	0.70
1/2	1.60

DV314 , Double seat SUCK BACK VALVES

1/4 Size

* More specifications can be obtained from the factory or agent for 3D model drawings



Order code

DV314 Pneumatic suck back valve

<input type="text"/>	<input type="text"/>	<input type="text"/>	<input type="text"/>	<input type="text"/>	<input type="text"/>	<input type="text"/>	<input type="text"/>	<input type="text"/>	<input type="text"/>
----------------------	----------------------	----------------------	----------------------	----------------------	----------------------	----------------------	----------------------	----------------------	----------------------

3 1 4

Valve body material									
PVDF					6				
PFA					7				
PTFE					8				
Diaphragm material									
PTFE					6				
Working mode									
Integrated						0			
Integrated (regulate)						1			
Double seat, NC-NO						2			
Double seat, NC-NO (Single regulate)						3			
Double seat, NC-NO (Double regulate)						4			
Double seat, NC-NC						6			
Double seat, NC-NC (Single regulate)						7			
Double seat, NC-NC (Double regulate)						8			
Connection mode									
Flare LINK: PVDF NUT							0		
Insert Bushing							2		
Flare LINK: PFA NUT							4		
Thread							9		
Connection standard									
ANSI UNF								4	
BSP/G								6	
NPT								8	
Interface size									
1/16"									02
1/8"									03
1/4"									06
3/8"									10
1/2"									12

