

**LORRIC<sup>®</sup>**  
paranoid about performance

Rotameter Product Catalogue



# Liquid Flowmeter

**LORRIC**®  
paranoid about performance

F22 .....	12
F32B .....	16
F34 .....	18
F45 .....	20
F45M Magnetic Duel-Indicator...	22
F46 .....	24
F101 .....	26
F201 .....	28
F301 .....	30
F311 .....	32

## F22Series - 192mm middle size pipe size 1/2"-3/4" F22 series



### Product Features · Use

- Designed for use with highly corrosive solutions.
- Equipped with an inductor, which confirms the pipeline's current capacity by means of detecting the floating migration. The inductor can be connected instruments or computers and is often used as part of the control or alarm system.
- Patented dual-indicator design for easy and clear flow range management.
- Laser engraved degree scales provide better readability and longer life.
- Available in customizable units, temperature, and molecular weight.
- Each batch of flow meters will be calibrated before delivery for our best precision guarantee.

### Standard Specs

- Model: F22PSU, F22 w/ Inductor PSU
- Adaptor Size: 1/2", 3/4"
- Applicable Fluid: Liquid (Highly corrosive)
- Flow direction: From the bottom up
- Engraved degree scales: Laser engraved degree scales
- Fluid Temperature: 50°C (Standard: UPVC adaptor)  
60°C (PP adaptor)
- Working Pressure: 6.0kg/cm<sup>2</sup>
- Full Scale Accuracy: ±5% F.S.
- Product Material

Body - PSU

Float - PP, PVDF, Telfone

Guide Rod - No

Guide Rod Bottom - PP

Adaptor - Welding Type: UPVC

Male, Female Thread: UPVC, PP, PSU

Butt-fusion Adaptor: PP

Union Nuts - UPVC

O-ring- EPDM, VITON

- Adaptor Material

Welding Type, Male Thread, Female Thread,

Butt-fusion Adaptor

※BSPT is standard thread type. NPT is available for custom order.

### Scale Range

Product Code	Scale Range※	Standard gravity
F22-4PM PVC float	0.3-4.0 L/min	1.0
F22-5LPM PVDF float	0.5-5.0 L/min	1.0
F22-8LPM Teflon float	0.8-8.0 L/min	1.0
F22-10LPM Teflon float	1.0-10 L/min	1.0
F22-500LPH Teflon float	50-500 L/h	1.0
F22 w/ inductor-6LPM PP float	0.5-6.0 L/min	1.0
F22 w/ inductor-11LPM PVDF float	1.0-11 L/min	1.0

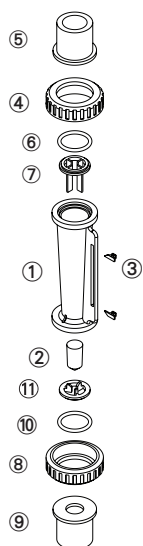
※ Liquid flow meters are calibrated for 20°C water.

### Maximum working temperature for different adaptor materials

Adaptor Types	Maximum working temperature materials		
	~ 50°C	~ 60°C	~ 100°C
Welding Type	UPVC	-	-
Male / Female Thread	UPVC	PP	PSU
Butt-fusion Adaptor	PP	PP	-
Panel Elbow Male Thread	UPVC	-	-

※ When maximum working temperature is over 50°C, the material for union nuts/ guide rod bottom and O-ring have to be PSU and VITON.

## Parts Material



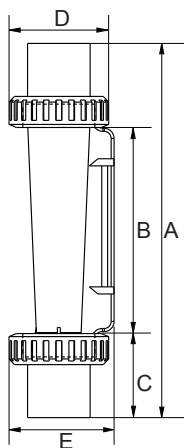
No.	Series	Material (Main material)※ 1			
		1	2	3	4
1	Body	PSU	PSU	PSU	PSU
2	Float	PP/ PVDF / Teflon	PP/ PVDF / Teflon	PP/ PVDF / Teflon	PP/ PVDF / Teflon
3	Guide Rod	ABS	ABS	ABS	ABS
4,8	Pointer	UPVC	UPVC	UPVC	PSU
5,9	Adaptor	UPVC	UPVC	PP※ 2	PSU※ 3
6,10	O-ring	EPDM	VITON	VITON	VITON
7,11	Guide Rod Bottom	PP	PP	PP	PP

※ 1.Material for different parts is optional for each flowmeter.

※ 2.For thread and welding adaptor only.

※ 3.For thread adaptor only.

## Parts Size



Adaptor Material	A	B	C	D	E
3/4"Male Thread	191	104	43.5	51	54
3/4"Female Thread	188	104	42	51	54
3/4" JIS	194	104	45	51	54
1/2"Male Thread	182	104	39	51	54
1/2"Female Thread	191	104	43.5	51	54
1/2" JIS	183	104	39.5	51	54
PP OD20 ID15.3	184	104	40	51	54

Unit: mm

## Specification inquiry (F22)

※ Contact us with below information.

- Fluid - \_\_\_\_\_
- Specific gravity - ☐ Standard-1.0 ☐ Other \_\_\_\_\_
- Pressure - ☐ Standard-6.0kg/cm<sup>2</sup> ☐ Other \_\_\_\_\_kg/cm<sup>2</sup>
- Temperature - ☐ Normal temperature ☐ Other \_\_\_\_\_°C
- Scale Range - \_\_\_\_\_ L/min ~ \_\_\_\_\_ L/min
- Adaptor Size - ☐ 3/4" JIS  
☐ Other \_\_\_\_\_
- Adaptor Material
  - ☐ Welding Type ☐ Male Thread
  - ☐ Female Thread ☐ Butt-fusion Adaptor
  - ☐ Panel Elbow Thread ☐ Other \_\_\_\_\_
- Inductor - ☐ Yes ☐ No
- Other - \_\_\_\_\_

## F32B Series - 195mm middle size pipe size 1/2"-1" **F32B series**



### Product Features · Use

- Designed for use with highly corrosive solutions.
- Equipped with an inductor, which confirms the pipeline's current capacity by means of detecting the floating migration. The inductor can be connected instruments or computers and is often used as part of the control or alarm system.
- Patented dual-indicator design for easy and clear flow range management.
- Laser engraved degree scales provide better readability and longer life.
- Available in customizable units, temperature, and molecular weight.
- Each batch of flow meters will be calibrated before delivery for our best precision guarantee.

### Standard Specs

- Model: F32B PSU, F32B w/ Inductor PSU
- Adaptor Size: 1/2", 3/4", 1"
- Applicable Fluid: Liquid (Highly corrosive)
- Flow direction: From the bottom up
- Engraved degree scales: Laser engraved degree scales
- Fluid Temperature: 50°C (Standard: UPVC adaptor)  
60°C (PP adaptor)

- Working Pressure: 6.0 kg/cm<sup>2</sup>

- Full Scale Accuracy: ±5% F.S.

#### Product Material

Body - PSU

Float - PVC, PP, PVDF, Teflon

Guide Rod - None

Guide Rod Bottom - PP

Adaptor - Welding Type: UPVC

Male, Female Thread: UPVC, PP

Butt-fusion Adaptor: PP

Union Nuts - UPVC

O-ring - EPDM, VITON

#### Adaptor Material

Welding Type, Male Thread, Female Thread,  
Butt-fusion Adaptor

※ BSPT is standard thread type. NPT is available for custom order.

### Scale Range

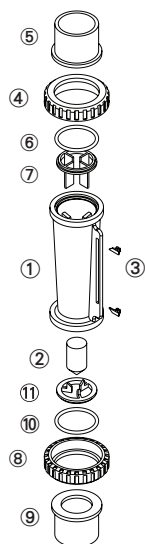
Product Code	Scale Range※	Standard gravity
F32B - 18LPM	9.0-18 L/min	1.0
F32B - 32LPM	16-32 L/min	1.0
F32B - 60LPM	30-60 L/min	1.0
F32B - 90LPM	45-90 L/min	1.0

※ Liquid flow meters are calibrated for 20°C water.

### Maximum working temperature for different adaptor materials

Adaptor Types	Maximum working temperature materials	
	~ 50°C	~ 60°C
Welding Type	UPVC	-
Male / Female Thread	UPVC	PP
Butt-fusion Adaptor	PP	PP
Panel Elbow Male Thread	UPVC	-

## Parts Material



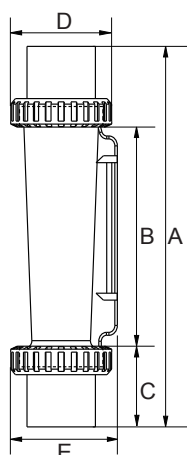
No.	Series	Material (Main material)* 1			
		1	2	3	4
1	Body	PSU	PSU	PSU	PSU
2	Float	PP	PP	PP	PP
3	Guide Rod	ABS	ABS	ABS	ABS
4,8	Pointer	UPVC	UPVC	UPVC	UPVC
5,9	Adaptor	UPVC	UPVC	PP* 2	PSU* 3
6,10	O-ring	EPDM	VITON	VITON	VITON
7,11	Guide Rod Bottom	PP	PP	PP	PP

※ 1. Material for different parts is optional for each flowmeter.

※ 2. For thread and welding adaptor only.

※ 3. For thread adaptor only.

## Parts Size



Adaptor Material	A	B	C	D	E
1" Male Thread	210	111	49.5	60	64
1" Female Thread	210	111	49.5	60	64
1" JIS	195	111	42	60	64
3/4" Male Thread	196	111	42.5	60	64
3/4" Female Thread	211	111	50	60	64
3/4" JIS	200	111	44.5	60	64
1/2" JIS	190	111	39.5	60	64
PP OD40.4 ID35	197	111	43	60	64
PP OD33 ID25.3	193	111	41	60	64

Unit: mm

## Specification inquiry (F32B)

※ Contact us with below information.

● Fluid - _____	● Adaptor Material
● Specific gravity - <input type="checkbox"/> Standard-1.0 <input type="checkbox"/> Other _____	<input type="checkbox"/> Welding Type <input type="checkbox"/> Male Thread
● Pressure - <input type="checkbox"/> Standard-6.0kg/cm <sup>2</sup> <input type="checkbox"/> Other _____ kg/cm <sup>2</sup>	<input type="checkbox"/> Female Thread <input type="checkbox"/> Butt-fusion Adaptor
● Temperature - <input type="checkbox"/> Normal temperature <input type="checkbox"/> Other _____ °C	<input type="checkbox"/> Other _____
● Scale Range - _____ L/min ~ _____ L/min	● Inductor - <input type="checkbox"/> Yes <input type="checkbox"/> No
● Adaptor Size - <input type="checkbox"/> 1" JIS	● Other - _____
<input type="checkbox"/> Other _____	

## F34Series - 270mm large size pipe size 1/2"-1"

## F34 series



### Product Features · Use

- Designed for use with highly corrosive solutions.
- Equipped with an inductor, which confirms the pipeline's current capacity by means of detecting the floating migration. The inductor can be connected instruments or computers and is often used as part of the control or alarm system.
- Patented dual-indicator design for easy and clear flow range management.
- Laser engraved degree scales provide better readability and longer life.
- Available in customizable units, temperature, and molecular weight.
- Each batch of flow meters will be calibrated before delivery for our best precision guarantee.

### Standard Specs

- Model: F34 PSU, F34 w/ Inductor PSU
- Adaptor Size: 1/2", 3/4", 1"
- Applicable Fluid: Liquid (Highly corrosive)
- Flow direction: From the bottom up
- Engraved degree scales: Laser engraved degree scales
- Fluid Temperature: 50°C (Standard: UPVC adaptor)  
60°C (PP adaptor)
- Working Pressure: 6.0 kg/cm<sup>2</sup>
- Full Scale Accuracy: ±5% F.S.

### Product Material

Body - PSU  
 Float - PP, PVDF  
 Guide Rod - No  
 Guide Rod Bottom - PP  
 Adaptor - Welding Type: UPVC  
 Male, Female Thread: UPVC, PP, PSU  
 Butt-fusion Adaptor: PP  
 Union Nuts - UPVC  
 O-ring - EPDM, VITON

### Adaptor Material

Welding Type, Male Thread, Female Thread,  
 Butt-fusion Adaptor

※ BSPT is standard thread type. NPT is available for custom order.

### Scale Range

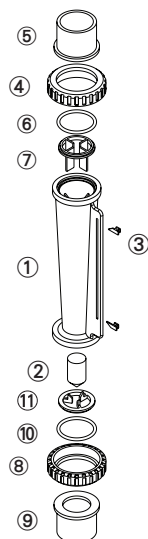
Product Code	Scale Range※	Standard gravity
F34 - 30LPM	3.0-30 L/min	1.0
F34 - 50LPM	5.0-50 L/min	1.0
F34 - 60LPM	6.0-60 L/min	1.0
F34 - 80LPM	8.0-80 L/min	1.0
F34 - 100LPM	10-100 L/min	1.0
F34 - 120LPM	12-120 L/min	1.0

※ Liquid flow meters are calibrated for 20°C water.

### Maximum working temperature for different adaptor materials

Adaptor Types	Maximum working temperature materials	
	~ 50°C	~ 60°C
Welding Type	UPVC	-
Male / Female Thread	UPVC	PP
Butt-fusion Adaptor	PP	PP
Panel Elbow Male Thread	UPVC	-

## Parts Material



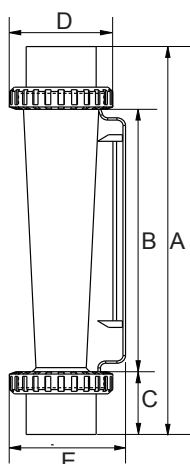
No.	Series	Material (Main material)* 1			
		1	2	3	4
1	Body	PSU	PSU	PSU	PSU
2	Float	PP	PP	PP	PP
3	Guide Rod	ABS	ABS	ABS	ABS
4,8	Pointer	UPVC	UPVC	UPVC	UPVC
5,9	Adaptor	UPVC	UPVC	PP* 2	PSU* 3
6,10	O-ring	EPDM	VITON	VITON	VITON
7,11	Guide Rod Bottom	PP	PP	PP	PP

※ 1. Material for different parts is optional for each flowmeter.

※ 2. For thread and welding adaptor only.

※ 3. For thread adaptor only.

## Parts Size



Adaptor Material	A	B	C	D	E
1" Male Thread	270	171	49.5	60	68
1" Female Thread	270	171	49.5	60	68
1" JIS	255	171	42	60	68
3/4" Male Thread	256	171	42.5	60	68
3/4" Female Thread	271	171	50	60	68
3/4" JIS	260	171	44.5	60	68
1/2" JIS	249	171	39	60	68
PP OD40.4 ID35	257	171	43	60	68
PP OD33 ID25.3	253	171	41	60	68

Unit: mm

## Specification inquiry (F34)

※ Contact us with below information.

- Fluid - \_\_\_\_\_
- Specific gravity - ☐ Standard-1.0 ☐ Other \_\_\_\_\_
- Pressure - ☐ Standard-6.0kg/cm<sup>2</sup> ☐ Other \_\_\_\_\_ kg/cm<sup>2</sup>
- Temperature - ☐ Normal temperature ☐ Other \_\_\_\_\_ °C
- Scale Range - \_\_\_\_\_ L/min ~ \_\_\_\_\_ L/min
- Adaptor Size - ☐ 1" JIS  
☐ Other \_\_\_\_\_
- Adaptor Material
  - ☐ Welding Type ☐ Male Thread
  - ☐ Female Thread ☐ Butt-fusion Adaptor
  - ☐ Panel Elbow Thread ☐ Other \_\_\_\_\_
- Inductor - ☐ Yes ☐ No
- Other - \_\_\_\_\_



## F45Series - 346mm large size pipe size 1-1/2"-2" **F45 series**



### Product Features · Use

- The flange flow meter is equipped with four stainless steel poles on four sides and uses flange adaptor. This flow meter is robust, highly secure and ideal for high pressure conditions. This flow meter's lifetime is usually longer than ordinary flow meters.
- Patented dual-indicator design for easy and clear flow range management.
- Laser engraved degree scales provide better readability and longer life.
- Available in customizable units, temperature, and molecular weight.
- Each batch of flow meters will be calibrated before delivery for our best precision guarantee.
- Hastelloy float is available for corrosive environment.

### ■ Standard Specs

- Model: F45PSU, F45H PSU
- Adaptor Size: 1"-1/2", 2"
- Applicable Fluid: Liquid
- Flow direction: From the bottom up
- Engraved degree scales: Laser engraved degree scales
- Fluid Temperature: 50°C (Standard: UPVC adaptor)
- Working Pressure: 6.0 kg/cm<sup>2</sup>
- Full Scale Accuracy: ±5% F.S.
- Product Material

Body - PSU

Float - Stainless 316, Hastelloy C

Guide Rod - Stainless 316, Ti, Hastelloy C

Guide Rod Bottom - PP

Adaptor - Welding Type: UPVC

Male, Female Thread: UPVC, PP

Butt-fusion Adaptor: PP

Flange: UPVC

Union Nuts - UPVC

O-ring - EPDM, VITON

Iron pillar (Flange type only) - Stainless 316, 304, 420

- Adaptor Material

Welding Type, Male Thread, Female Thread,

Butt-fusion Adaptor, Flange

※ BSPT is standard thread type. NPT is available for custom order.

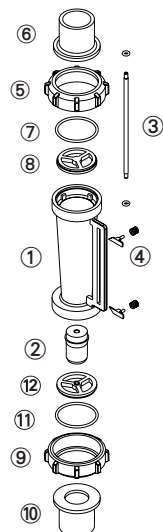
### ■ Scale Range

Product Code	Scale Range※	Standard gravity
F45 (PSU,H PSU) - 100LPM	10-100 L/min	1.0
F45 (PSU,H PSU) - 150LPM	15-150 L/min	1.0
F45 (PSU,H PSU) - 200LPM	20-200 L/min	1.0
F45 (PSU,H PSU) - 250LPM	25-250 L/min	1.0
F45 (PSU,H PSU) - 300LPM	30-300 L/min	1.0
F45 (PSU,H PSU) - 450LPM	50-450 L/min	1.0
F45 (PSU,H PSU) - 600LPM	100-600 L/min	1.0

※ Liquid flow meters are calibrated for 20°C water.

※ F45 PC product has ceased production.

## Parts Material



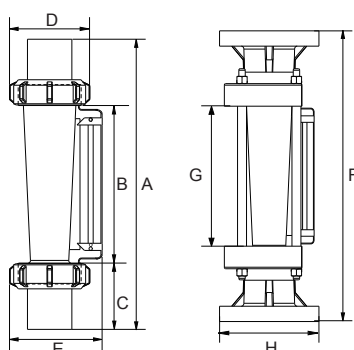
No.	Series	Material (Main material)* 1		
		1	2	3
1	Body	PSU	PSU	PSU
2	Float	S316	Hastelloy C	Hastelloy C
3	Guide Rod	S316	Ti	Hastelloy C
4	Pointer	ABS	ABS	ABS
5,9	Union Nuts	UPVC	UPVC	UPVC
6,10	Adaptor	UPVC	UPVC	PSU* 2
7,11	O-ring	VITON	VITON	VITON
8,12	Guide Rod Bottom	PP	PP	PP

\* 1. Material for different parts is optional for each flowmeter.

\* 2. For thread adaptor only.

\* 3. F45 PC product has ceased production.

## Parts Size



Adaptor Material	A / F *	B / G *	C / H *	D	E
1"-1/2" Male Thread	346	187	79.5	109	127
1"-1/2" JIS	345	187	79	109	127
2" Male Thread	345	187	79	109	127
2" Female Thread	345	187	79	109	127
2" JIS	357	187	85	109	127
PP OD72.7 ID60.2	305	187	59	109	127
PP OD60 ID48.10	345	187	79	109	127
2" Flange	390	187	155 *	-	-

\* Size of flange type

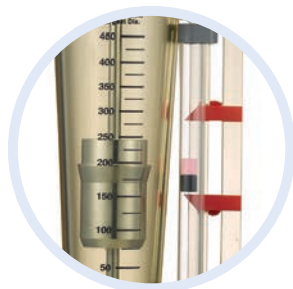
Unit: mm

## Specification inquiry (F45)

\* Contact us with below information.

- Fluid - ☐ Water ☐ Other \_\_\_\_\_
  - Specific gravity - ☐ Standard-1.0 ☐ Other \_\_\_\_\_
  - Pressure - ☐ Standard-6.0kg/cm<sup>2</sup> ☐ Other \_\_\_\_\_ kg/cm<sup>2</sup>
  - Temperature - ☐ Normal temperature ☐ Other \_\_\_\_\_ °C
  - Scale Range - \_\_\_\_\_ L/min ~ \_\_\_\_\_ L/min
  - Adaptor Size - ☐ 1"-1/2" ☐ 2" ☐ Other \_\_\_\_\_
  - Adaptor Material
    - ☐ Welding Type ☐ Male Thread
    - ☐ Female Thread ☐ Butt-fusion Adaptor
    - ☐ Panel Elbow Thread ☐ Other \_\_\_\_\_
  - Material
    - ☐ 1 Body PSU
    - ☐ 2 Body PSU Hastelloy C Float, Ti Guide Rod
    - ☐ 3 Body PSU Hastelloy C Float & Guide Rod
    - ☐ 4 Other
- Specs besides above listed information \_\_\_\_\_

F45Magnetic - Magnetic Duel-Indicator pipe size 1-1/2" **F45M**



Product Features · Use

- Ideal for dark color and or solutions that easily precipitate.
- Patented dual-indicator design for easy and clear flow range management.
- Laser engraved degree scales provide better readability and longer life.
- Available in customizable units, temperature, and molecular weight.
- Each batch of flow meters will be calibrated before delivery for our best precision guarantee.

Standard Specs

- Model: F45M PSU, F45MH PSU
- Adaptor Size: 1"-1/2", 2"
- Applicable Fluid: Liquid (Dark liquid)
- Flow direction: From the bottom up
- Engraved degree scales: Laser engraved degree scales
- Fluid Temperature: 50°C (Standard)
- Working Pressure: 6.0 kg/cm<sup>2</sup>
- Full Scale Accuracy: ±5% F.S.
- Product Material

Body - PSU

Float - Stainless 316, Hastelloy C

Guide Rod - Stainless 316, Ti, Hastelloy C

Guide Rod Bottom - PP

Adaptor - Welding Type: UPVC

Male, Female Thread: UPVC, PP

Butt-fusion Adaptor: PP

Union Nuts - UPVC

O-ring - EPDM, VITON

Iron pillar (Flange type only) - Stainless 316, 304, 420

- Adaptor Material

Welding Type, Male Thread, Female Thread,

Butt-fusion Adaptor, Flange

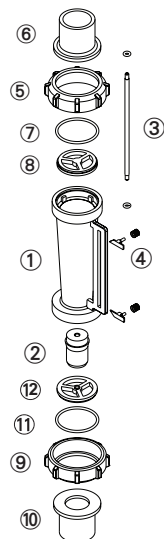
※ BSPT is standard thread type. NPT is available for custom order.

Scale Range

Product Code	Scale Range※	Standard gravity
F45M PSU - 300LPM	50-300 L/min	1.0
F45M PSU - 450LPM	50-450 L/min	1.0
F45M PSU - 600LPM	100-600 L/min	1.0

※ Liquid flow meters are calibrated for 20°C water.

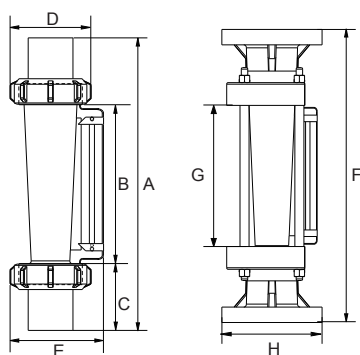
## Parts Material



No.	Series	Material (Main material)*			
		1	2	3	4
1	Body	PSU	PSU	PSU	PSU
2	Float	S316	S316	S316	S316
3	Guide Rod	S316	S316	S316	S316
4	Pointer	ABS	ABS	ABS	ABS
5,9	Union Nuts	UPVC	UPVC	UPVC	UPVC
6,10	Adaptor	UPVC	UPVC	Flange UPVC	Male / Female Thread PSU
7,11	O-ring	VITON	EPDM	VITON	VITON
8,12	Guide Rod Bottom	PP	PP	PP	PP

※ Material for different parts is optional for each flowmeter.

## Parts Size



Adaptor Material	A / F ※	B / G ※	C / H ※	D	E
1"-1/2" Female Thread	346	187	79.5	109	127
1"-1/2" JIS	345	187	79	109	127
2" Male Thread	345	187	79	109	127
2"Female Thread	345	187	79	109	127
2" JIS	357	187	85	109	127
PP OD72.7 ID60.2	305	187	59	109	127
PP OD60 ID48.10	345	187	79	109	127
2" Flange	390	187	155	-	-

※ Size of flange type

Unit: mm

## Specification inquiry (F45M PSU)

※ Contact us with below information.

- Fluid - ☐ Water ☐ Other \_\_\_\_\_
- Specific gravity - ☐ Standard-1.0 ☐ Other \_\_\_\_\_
- Pressure - ☐ Standard-6.0kg/cm<sup>2</sup> ☐ Other \_\_\_\_\_ kg/cm<sup>2</sup>
- Temperature - ☐ Normal temperature ☐ Other \_\_\_\_\_ °C
- Scale Range - \_\_\_\_\_ L/min ~ \_\_\_\_\_ L/min
- Adaptor Size - ☐ 1"-1/2" ☐ 2"  
☐ Other \_\_\_\_\_

- Adaptor Material
  - ☐ Welding Type ☐ Male Thread
  - ☐ Female Thread ☐ Butt-fusion Adaptor
  - ☐ Panel Elbow Thread ☐ Other \_\_\_\_\_
- Material
  - ☐ 1 UPVC ☐ 2 EPDM O-ring
  - ☐ 3 UPVC Flange
  - ☐ 4 PSU Male / Female Thread
  - ☐ 5 Other

Specs besides above listed information \_\_\_\_\_

F46Series - 346mm large size pipe size 1-1/2"-2"

F46 series



Product Features · Use

- Designed for use with highly corrosive solutions.
- Patented dual-indicator design for easy and clear flow range management.
- Laser engraved degree scales provide better readability and longer life.
- Available in customizable units, temperature, and molecular weight.
- Each batch of flow meters will be calibrated before delivery for our best precision guarantee.

Standard Specs

- Model: F46PSU
- Adaptor Size: 1"-1/2", 2"
- Applicable Fluid: Liquid (Highly corrosive)
- Flow direction: From the bottom up
- Engraved degree scales: Laser engraved degree scales
- Fluid Temperature: 50°C (Standard)
- Working Pressure: 6.0 kg/cm²
- Full Scale Accuracy: ±5% F.S.
- Product Material

Body - PSU  
Float - PP, Teflon  
Guide Rod - None  
Guide Rod Bottom - PP  
Adaptor - Welding Type: UPVC  
Male, Female Thread: UPVC, PP  
Butt-fusion Adaptor: PP  
Union Nuts - UPVC  
O-ring - EPDM, VITON

- Adaptor Material

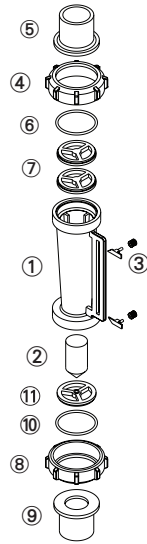
Welding Type, Male Thread, Female Thread,  
Butt-fusion Adaptor  
※ BSPT is standard thread type. NPT is available for custom order.

Scale Range

Product Code	Scale Range※	Standard gravity
F46PSU - 100LPM Telfon float	20-100 L/min	1.0
F46PSU - 150LPM PP float	30-150 L/min	1.0
F46PSU - 200LPM PP float	35-200 L/min	1.0
F46PSU - 300LPM PP float	35-250 L/min	1.0

※ Liquid flow meters are calibrated for 20°C water.

## Parts Material

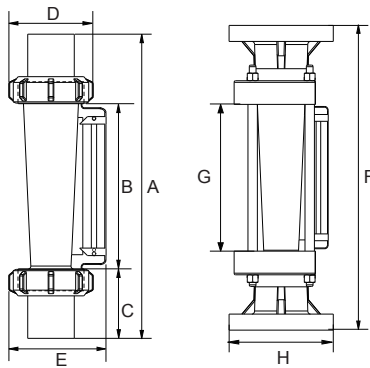


No.	Series	Material (Main material) <sup>※ 1</sup>			
		1	2	3	4
1	Body	PSU	PSU	PSU	PSU
2	Float	Teflon	PP	PP	PP
3	Guide Rod	ABS	ABS	ABS	ABS
4,8	Pointer	UPVC	UPVC	UPVC	UPVC
5,9	Adaptor	UPVC	UPVC	UPVC	PSU <sup>※ 2</sup>
6,10	O-ring	VITON	EPDM	VITON	VITON
7,11	Guide Rod Bottom	PP	PP	PP	PP

※ 1. Material for different parts is optional for each flowmeter.

※ 2. For thread adaptor only.

## Parts Size



Adaptor Material	A / F <sup>※</sup>	B / G <sup>※</sup>	C / H <sup>※</sup>	D	E
1"-1/2" Female Thread	346	187	79.5	109	127
1"-1/2" JIS	345	187	79	109	127
2" Male Thread	345	187	79	109	127
2" Female Thread	345	187	79	109	127
2" JIS	357	187	85	109	127
PP OD72.7 ID60.2	305	187	59	109	127
PP OD60 ID48.10	345	187	79	109	127
2" Flange	390	187	155	-	-

※ Size of flange type

Unit: mm

## Specification inquiry (F46)

※ Contact us with below information.

- Fluid - ☐ Water ☐ Other \_\_\_\_\_
- Specific gravity - ☐ Standard-1.0 ☐ Other \_\_\_\_\_
- Pressure - ☐ Standard-6.0kg/cm<sup>2</sup> ☐ Other \_\_\_\_\_ kg/cm<sup>2</sup>
- Temperature - ☐ Normal temperature ☐ Other \_\_\_\_\_ °C
- Scale Range - \_\_\_\_\_ L/min ~ \_\_\_\_\_ L/min
- Adaptor Size - ☐ 1"-1/2" ☐ 2"  
☐ Other \_\_\_\_\_

- Adaptor Material
  - ☐ Welding Type ☐ Male Thread
  - ☐ Female Thread ☐ Butt-fusion Adaptor
  - ☐ Panel Elbow Thread ☐ Other \_\_\_\_\_
- Material
  - ☐ 1 Teflon float ☐ 2 PP float
  - ☐ 3 PP float VITON O-ring
  - ☐ 4 PP float PSU adaptor
  - ☐ 5 Other

Specs besides above listed information \_\_\_\_\_

# F101- New 168mm middle size pipe size 1/2"

## F101 series



### Product Features · Use

- 4 design innovations to improve usability:

New body design: Decreases the vibration when working which stabilises flow distribution./ New indicator design: Easily adjustable and positionable./ Thickened threads for caps: Caps are easy to be locked even under bad concentricity./ Models with and without guide rods are able to share the same adaptors.

- Patented dual-indicator design for easy and clear flow range management.
- Laser engraved degree scales provide better readability and longer life.
- Available in customizable units, temperature, and molecular weight.

### Standard Specs

- Model: F101PC, F101PSU, F101H PSU
- Adaptor Size: 1/2"
- Applicable Fluid: Liquid
- Flow direction: From the bottom up
- Fluid Temperature: 50°C (Standard: UPVC adaptor)  
60°C (PP adaptor)  
70°C(PVDF adaptor)
- Working Pressure: 5.0 kg/cm<sup>2</sup> MAX
- Full Scale Accuracy: ±5% F.S.
- Product Material

Body - PC, PSU

Float - Stainless 316, Hastelloy C

Guide Rod - Stainless 316, Ti, Hastelloy C

Guide Rod Bottom - PP, FRPP

Adaptor - Welding Type: UPVC

Male, Female Thread: UPVC, PVDF

Butt-fusion Adaptor: PP

Union Nuts - UPVC, Aluminum

O-ring - EPDM, VITON

- Adaptor Material

Welding Type, Male Thread, Female Thread,  
Butt-fusion Adaptor

※ BSPT is standard thread type. NPT is available for custom order.

### Scale Range

Product Code	Scale Range※ 1 ※ 2 (L/min)
F101-2LPM	0.2-2.0 / S, H
F101-5LPM	0.5-5.0 / S, H
F101-10LPM	1.0-10 / S, H
F101-15LPM	1.5-15 / S, H
F101-20LPM	2.0-20 / S, H

※ 1.Liquid flow meters are calibrated for 20°C water.

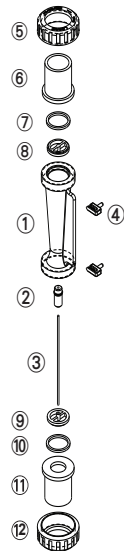
※ 2."/ "float material, S- Stainless 316, H- Hastelloy C.

### Maximum working temperature for different adaptor materials

Adaptor Types	Maximum working temperature materials		
	~ 50°C	~ 60°C	~ 70°C
Welding Type	UPVC	-	-
Male / Female Thread	UPVC	-	PVDF
Butt-fusion Adaptor	-	PP	-

※ When maximum working temperature is over 50°C, the material for guide rod bottom and union nuts have to be PSU and aluminium.

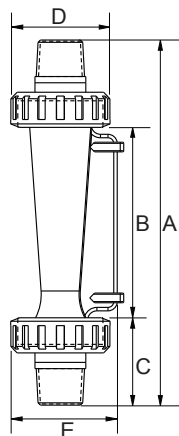
### Parts Material



No.	Series	Material (Main material)*			
		1	2	3	4
1	Body	PC	PC	PSU	PSU
2	Float	S316	S316	Hastelloy C	Hastelloy C
3	Guide Rod	S316	S316	Ti	Hastelloy C
4	Pointer	PP	PP	PP	PP
5,12	Union Nuts	UPVC	UPVC	UPVC	Aluminum
6,11	Adaptor	UPVC	UPVC	UPVC	UPVC
7,10	O-ring	EPDM	VITON	VITON	VITON
8,9	Guide Rod Bottom	PP	PP	PP	PP

※ Material for different parts is optional for each flowmeter.

### Parts Size



Adaptor Material	A	B	C	D	E
1/2" Male Thread	164	85	39.5	43	49.5
1/2" Female Thread	166	85	40.5	43	49.5
1/2" JIS	166	85	40.5	43	49.5

Unit: mm

### Specification inquiry (F101)

※ Contact us with below information.

- Fluid - ☐ Water ☐ Other \_\_\_\_\_
- Specific gravity - ☐ Standard-1.0 ☐ Other \_\_\_\_\_
- Pressure - ☐ Standard-5.0kg/cm<sup>2</sup> ☐ Other \_\_\_ kg/cm<sup>2</sup>
- Temperature - ☐ Normal temperature ☐ Other \_\_\_ °C
- Scale Range - \_\_\_\_\_ L/min ~ \_\_\_\_\_ L/min
- Adaptor Size - ☐ 3/4" JIS ☐ Other \_\_\_\_\_
- Adaptor Material - ☐ Welding Type ☐ Male Thread  
☐ Female Thread ☐ Butt-fusion Adaptor  
☐ Other \_\_\_\_\_

- Material
  - ☐ 1 Body PC ☐ 2 Body PSU
  - ☐ 3 Body PSU Hastelloy C Float, Ti Guide Rod
  - ☐ 4 Body PSU Hastelloy C Float & Guide Rod  
Adaptor PSU (for high working temperature)
  - ☐ 5 Other
- Specs besides above listed information \_\_\_\_\_



# F201- New 192mm middle size pipe size 1/2"-3/4" F201 series



## Product Features · Use

- 4 design innovations to improve usability:  
New body design: Decreases the vibration when working which stabilises flow distribution./ New indicator design: Easily adjustable and positionable./ Thickened threads for caps: Caps are easy to be locked even under bad concentricity./ Models with and without guide rods are able to share the same adaptors.
- Patented dual-indicator design for easy and clear flow range management.
- Laser engraved degree scales provide better readability and longer life.
- Available in customizable units, temperature, and molecular weight.

## Standard Specs

- Model: F201PC, F201PSU, F201H PSU
- Adaptor Size: 1/2", 3/4"
- Applicable Fluid: Liquid
- Flow direction: From the bottom up
- Engraved degree scales: Laser engraved degree scales
- Fluid Temperature: 50°C (Standard: UPVC adaptor)  
60°C (PP adaptor)
- Working Pressure: 5.0kg/cm<sup>2</sup>
- Full Scale Accuracy: ±5% F.S.
- Product Material

Body - PC, PSU

Float - Stainless 316, Hastelloy C

Guide Rod - Stainless 316, Ti, Hastelloy C

Guide Rod Bottom - PP

Adaptor - Welding Type: UPVC

Male, Female Thread: UPVC, PP

Butt-fusion Adaptor: PP

Union Nuts - UPVC

O-ring - EPDM, VITON

- Adaptor Material

Welding Type, Male Thread, Female Thread,  
Butt-fusion Adaptor

※ BSPT is standard thread type. NPT is available for custom order.

## Scale Range

Product Code	Scale Range ※ 1※ 2 (L/min)
F201-10LPM	1.0-10 / S, H
F201-15LPM	1.5-15 / S, H
F201-20LPM	2.0-20 / S, H
F201-30LPM	3.0-30 / S, H
F201-40LPM	4.0-40 / S, H
F201-50LPM	5.0-50 / S, H

※ 1.Liquid flow meters are calibrated for 20°C water.

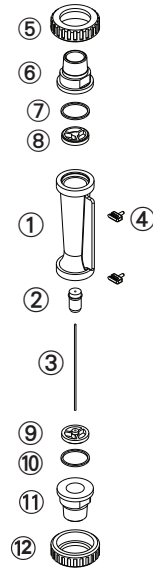
※ 2." / "float material, S- Stainless 316, H- Hastelloy C.

## Maximum working temperature for different adaptor materials

Adaptor Types	Maximum working temperature materials		
	~ 50°C	~ 60°C	~ 100°C
Welding Type	UPVC	-	-
Male / Female Thread	UPVC	PP	-
Butt-fusion Adaptor	-	PP	-

※ When maximum working temperature is over 50°C, the material for guide rod bottom and union nuts have to be PSU and aluminium.

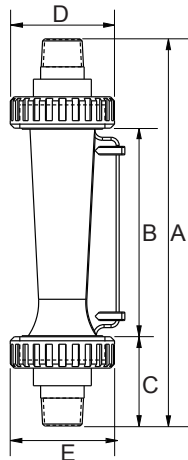
## Parts Material



No.	Series	Material (Main material)*			
		1	2	3	4
1	Body	PC	PSU	PSU	PSU
2	Float	S316	S316	Hastelloy C	PVC
3	Guide Rod	S316	S316	Ti	Hastelloy C
4	Pointer	PP	PP	PP	PP
5,12	Union Nuts	UPVC	UPVC	UPVC	UPVC
6,11	Adaptor	UPVC	UPVC	UPVC	UPVC
7,10	O-ring	EPDM	VITON	VITON	VITON
8,9	Guide Rod Bottom	PP	PP	PP	PP

\* Material for different parts is optional for each flowmeter.

## Parts Size



Adaptor Material	A	B	C	D	E
3/4" Male Thread	192	102	45	51	56
3/4" JIS	194	102	46	51	56
1/2" Male Thread	182	102	40	51	56
1/2" Female Thread	192	102	45	51	56
1/2" JIS	184	102	41	51	56

Unit: mm

## Specification inquiry (F201)

\* Contact us with below information.

- Fluid - ☐ Water ☐ Other \_\_\_\_\_
- Specific gravity - ☐ Standard-1.0 ☐ Other \_\_\_\_\_
- Pressure - ☐ Standard-5.0kg/cm<sup>2</sup> ☐ Other \_\_\_ kg/cm<sup>2</sup>
- Temperature - ☐ Normal temperature ☐ Other \_\_\_ °C
- Scale Range - \_\_\_\_\_ L/min ~ \_\_\_\_\_ L/min
- Adaptor Size - ☐ 3/4" JIS ☐ Other \_\_\_\_\_
- Adaptor Material - ☐ Welding Type ☐ Male Thread
  - ☐ Female Thread ☐ Butt-fusion Adaptor
  - ☐ Other \_\_\_\_\_

- Material
  - ☐ 1 Body PC ☐ 2 Body PSU
  - ☐ 3 Body PSU Hastelloy C FloaT, Ti Guide Rod
  - ☐ 4 Body PSU Hastelloy C Float & Guide Rod
- Other
 

Specs besides above listed information \_\_\_\_\_

## F301- New 270mm large size pipe size 3/4"-1"

## F301 series



### Product Features · Use

- 4 design innovations to improve usability:

New body design: Decreases the vibration when working which stabilises flow distribution./ New indicator design: Easily adjustable and positionable./ Thickened threads for caps: Caps are easy to be locked even under bad concentricity./ Models with and without guide rods are able to share the same adaptors.

- Patented dual-indicator design for easy and clear flow range management.
- Laser engraved degree scales provide better readability and longer life.
- Available in customizable units, temperature, and molecular weight.

### Standard Specs

- Model: F301PSU, F301H PSU
- Adaptor Size: 1/2", 3/4", 1"
- Applicable Fluid: Liquid
- Flow direction: From the bottom up
- Engraved degree scales: Laser engraved degree scales
- Fluid Temperature: 50°C (Standard: UPVC adaptor)  
60°C (PP adaptor)

- Working Pressure: 5.0 kg/cm<sup>2</sup>

- Full Scale Accuracy: ±5% F.S.

- Product Material

Body - PSU

Float - Stainless 316, Hastelloy C

Guide Rod - Stainless 316, Hastelloy C

Guide Rod Bottom - PP

Adaptor - Welding Type: UPVC

Male, Female Thread: UPVC, PP

Butt-fusion Adaptor: PP

Union Nuts - UPVC

O-ring - EPDM, VITON

- Adaptor Material

Welding Type, Male Thread, Female Thread,

Butt-fusion Adaptor

※ BSPT is standard thread type. NPT is available for custom order.

### Scale Range

Product Code	Scale Range ※ 1 ※ 2 (L/min)
F301 - 20LPM	2.0-20 / S, H
F301 - 30LPM	3.0-30 / S, H
F301 - 50LPM	5.0-50 / S, H
F301 - 80LPM	8.0-80 / S, H
F301 - 100LPM	10-100 / S, H

※ 1.Liquid flow meters are calibrated for 20°C water.

※ 2." / "float material, S- Stainless 316, H- Hastelloy C.

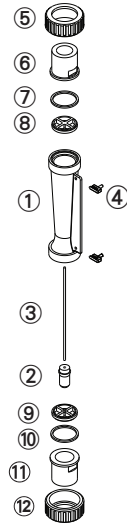
### Maximum working temperature for different adaptor materials

Adaptor Types	Maximum working temperature materials		
	~ 50°C	~ 60°C	~ 100°C
Welding Type	UPVC	-	-
Male / Female Thread	UPVC	PP	-
Butt-fusion Adaptor	-	PP	-

※ When maximum working temperature is over 50°C, the material for guide rod bottom and union nuts have to be PSU and aluminium.

※ If the maximum working temperature requirement of the adaptor is over 60°C, please contact LORRIC directly.

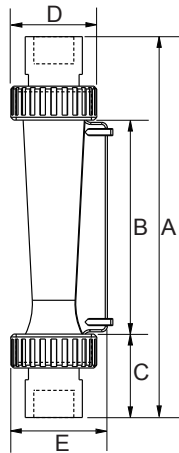
## Parts Material



No.	Series	Material (Main material)*			
		1	2	3	4
1	Body	PSU	PSU	PSU	PSU
2	Float	S316	S316	Hastelloy C	PVC
3	Guide Rod	S316	S316	Ti	Hastelloy C
4	Pointer	PP	PP	PP	PP
5,12	Union Nuts	UPVC	UPVC	UPVC	UPVC
6,11	Adaptor	UPVC	UPVC	UPVC	UPVC
7,10	O-ring	EPDM	VITON	VITON	VITON
8,9	Guide Rod Bottom	PP	PP	PP	PP

※ Material for different parts is optional for each flowmeter.

## Parts Size



Adaptor Material	A	B	C	D	E
1"Male Thread	270	153	58.5	61	69
1"Female Thread	270	153	58.5	61	69
1" JIS	255	153	51	61	69
PP OD33 ID25.2	254	153	50.5	61	69
3/4"Male Thread	256	153	51.5	61	69
3/4" JIS	260	153	53.5	61	69

Unit: mm

## Specification inquiry (F301)

※ Contact us with below information.

- Fluid - ☐ Water ☐ Other \_\_\_\_\_
- Specific gravity - ☐ Standard-1.0 ☐ Other \_\_\_\_\_
- Pressure - ☐ Standard-5.0kg/cm<sup>2</sup> ☐ Other \_\_\_\_kg/cm<sup>2</sup>
- Temperature - ☐ Normal temperature ☐ Other \_\_\_\_°C
- Scale Range - \_\_\_\_\_ L/min ~ \_\_\_\_\_ L/min
- Adaptor Size - ☐ 1" JIS ☐ Other \_\_\_\_\_
- Adaptor Material - ☐ Welding Type ☐ Male Thread  
☐ Female Thread ☐ Butt-fusion Adaptor  
☐ Other \_\_\_\_\_

- Material
  - ☐ 1 Body PC ☐ 2 Body PSU
  - ☐ 3 Body PSU Hastelloy C Float, Ti Guide Rod
  - ☐ 4 Body PSU Hastelloy C Float & Guide Rod  
Adaptor PSU (for high working temperature)
  - ☐ 5 Other
- Specs besides above listed information \_\_\_\_\_

# F311- New 195mm middle size pipe size 1/2"-1"

F311 series



## Product Features · Use

- 4 design innovations to improve usability:  
New body design: Decreases the vibration when working which stabilises flow distribution./ New indicator design: Easily adjustable and positionable./ Thickened threads for caps: Caps are easy to be locked even under bad concentricity./ Models with and without guide rods are able to share the same adaptors.
- Patented dual-indicator design for easy and clear flow range management.
- Laser engraved degree scales provide better readability and longer life.
- Available in customizable units, temperature, and molecular weight.

## Standard Specs

- Model: F311 PSU
- Adaptor Size: 1/2", 3/4", 1"
- Applicable Fluid: Liquid
- Flow direction: From the bottom up
- Engraved degree scales: Laser engraved degree scales
- Fluid Temperature: 50°C (Standard: UPVC adaptor)  
60°C (PP adaptor)
- Working Pressure: 5.0 kg/cm<sup>2</sup>
- Full Scale Accuracy: ±5% F.S.
- Product Material

Body - PSU  
Float - Stainless 316, Hastelloy C  
Guide Rod - Stainless 316  
Guide Rod Bottom - PP  
Adaptor - Welding Type: UPVC  
Male, Female Thread: UPVC, PP  
Butt-fusion Adaptor: PP  
Union Nuts - UPVC  
O-ring - EPDM, VITON

## Adaptor Material

Welding Type, Male Thread, Female Thread,  
Butt-fusion Adaptor

※ BSPT is standard thread type. NPT is available for custom order.

## Scale Range

Product Code	Scale Range※ 1 ※ 2 (L/min)
F311 - 80LPM	23-80 / S, H
F311 - 100LPM	20-100 / S, H

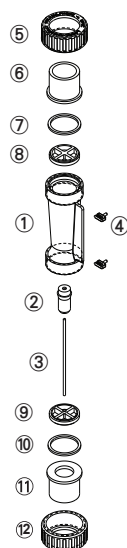
※ 1.Liquid flow meters are calibrated for 20°C water.

※ 2." / "float material, S- Stainless 316, H- Hastelloy C.

## Maximum working temperature for different adaptor materials

Adaptor Types	Maximum working temperature materials	
	~ 50°C	~ 60°C
Welding Type	UPVC	-
Male / Female Thread	UPVC	PP
Butt-fusion Adaptor	PP	PP

## Parts Material

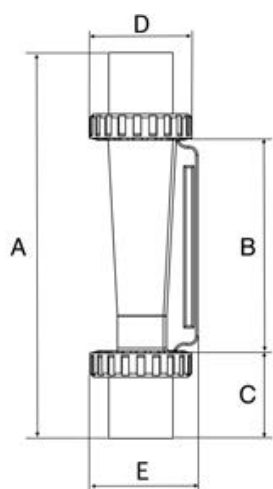


No.	Series	Material (Main material)* 1			
		1	2	3	4
1	Body	PSU	PSU	PSU	PSU
2	Float	S316	S316	S316	S316
3	Guide Rod	S316	S316	S316	S316
4	Pointer	PP	PP	PP	PP
5,12	Union Nuts	UPVC	UPVC	UPVC	UPVC
6,11	Adaptor	UPVC	UPVC	PP*2	PP*2
7,10	O-ring	EPDM	VITON	VITON	VITON
8,9	Guide Rod Bottom	PP	PP	PP	PP

※ 1. Material for different parts is optional for each flowmeter.

※ 2. For thread and welding adaptor only.

## Parts Size



Adaptor Material	A	B	C	D	E
1" Male Thread	211	93	59	61	67
1" Female Thread	210	93	58.5	61	67
1" JIS	196	93	51.5	61	67
3/4" Male Thread	197	93	52	61	67
3/4" Female Thread	212	93	59.5	61	67
3/4" JIS	200	93	53.5	61	67
1/2" JIS	190	93	48.5	61	67
PP OD33 ID25.3	194	93	50.5	61	67

Unit: mm

## Specification inquiry (F311)

※ Contact us with below information.

- Fluid - ☐ Water ☐ Other \_\_\_\_\_
- Specific gravity - ☐ Standard-1.0 ☐ Other \_\_\_\_\_
- Pressure - ☐ Standard-5.0kg/cm<sup>2</sup> ☐ Other \_\_\_ kg/cm<sup>2</sup>
- Temperature - ☐ Normal temperature ☐ Other \_\_\_ °C
- Scale Range - \_\_\_\_\_ L/min ~ \_\_\_\_\_ L/min
- Adaptor Size - ☐ 1" JIS  
☐ Other \_\_\_\_\_
- Adaptor Material  
☐ Welding Type ☐ Male Thread  
☐ Female Thread ☐ Butt-fusion Adaptor  
☐ Other \_\_\_\_\_
- Inductor - ☐ Yes ☐ No
- Other - \_\_\_\_\_

# Gas Flowmeter

**LORRIC**®  
paranoid about performance

F201A..... 42

F301A..... 44

## F201A- New 192mm middle size pipe size 1/2"-3/4" F201A series



### Product Features · Use

- 4 design innovations to improve usability:

New body design: Decreases the vibration when working which stabilises flow distribution./ New indicator design: Easily adjustable and positionable./ Thickened threads for caps: Caps are easy to be locked even under bad concentricity./ Models with and without guide rods are able to share the same adaptors.

- Patented dual-indicator design for easy and clear flow range management.
- Laser engraved degree scales provide better readability and longer life.
- Available in customizable units, temperature, and molecular weight.

### Standard Specs

- Model: F201APC, F201APSU, F201AH PSU
- Adaptor Size: 1/2", 3/4"
- Applicable Fluid: Gas
- Flow direction: From the bottom up
- Engraved degree scales: Laser engraved degree scales
- Fluid Temperature: 50°C (Standard: UPVC adaptor)  
60°C (PP adaptor)
- Working Pressure: 5.0kg/cm<sup>2</sup>
- Full Scale Accuracy: ±5% F.S.
- Product Material

Body - PC, PSU

Float - Stainless 316, Hastelloy C

Guide Rod - Stainless 316, Ti, Hastelloy C

Guide Rod Bottom - PP

Adaptor - Welding Type: UPVC

Male, Female Thread: UPVC, PP

Butt-fusion Adaptor: PP

Union Nuts - UPVC

O-ring - EPDM, VITON

- Adaptor Material

Welding Type, Male Thread, Female Thread,  
Butt-fusion Adaptor

※ BSPT is standard thread type. NPT is available for custom order.

### Scale Range

Product Code	Scale Range ※ 1※ 2 (NLPM)
F201A-30NLPM	3.0-30 / P
F201A-50NLPM	5.0-50 / P
F201A-100NLPM	10-100 / P
F201A-350NLPM	35-350 / S, H
F201A-500NLPM	50-500 / S, H
F201A-1000NLPM	100-1000 / S, H

※ 1. Gas flow meters are calibrated for normal condition. (0°C, 1 atm)

※ 2. / "float material, S- Stainless 316, P- PVC, H- Hastelloy C.

### Maximum working temperature for different adaptor materials

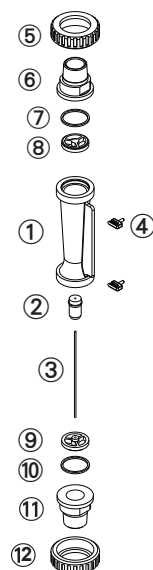
Adaptor Types	Maximum working temperature materials		
	~ 50°C	~ 60°C	~ 100°C
Welding Type	UPVC	-	-
Male / Female Thread	UPVC	PP	-
Butt-fusion Adaptor	-	PP	-

※ When maximum working temperature is over 50°C, the material for guide rod bottom and union nuts have to be PSU and aluminium.

※ If the maximum working temperature requirement of the adaptor is over 60°C, please contact LORRIC directly.



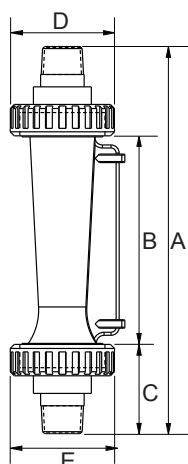
### Parts Material



No.	Series	Material (Main material)*			
		1	2	3	4
1	Body	PC	PSU	PSU	PSU
2	Float	S316	S316	Hastelloy C	PVC
3	Guide Rod	S316	S316	Ti	Hastelloy C
4	Pointer	PP	PP	PP	PP
5,12	Union Nuts	UPVC	UPVC	UPVC	UPVC
6,11	Adaptor	UPVC	UPVC	UPVC	UPVC
7,10	O-ring	EPDM	VITON	VITON	VITON
8,9	Guide Rod Bottom	PP	PP	PP	PP

\* Material for different parts is optional for each flowmeter.

### Parts Size



Adaptor Material	A	B	C	D	E
3/4" Male Thread	192	102	45	51	56
3/4" JIS	194	102	46	51	56
1/2" Male Thread	182	102	40	51	56
1/2" Female Thread	192	102	45	51	56
1/2" JIS	184	102	41	51	56

Unit: mm

### Specification inquiry (F201A)

\* Contact us with below information.

- Fluid - ☐ Gas ☐ Other \_\_\_\_\_
- Specific gravity - ☐ Standard-1.0 ☐ Other \_\_\_\_\_
- Pressure - ☐ Standard-5.0kg/cm<sup>2</sup> ☐ Other \_\_\_ kg/cm<sup>2</sup>
- Temperature - ☐ Normal temperature ☐ Other \_\_\_ °C
- Scale Range - \_\_\_\_\_ L/min ~ \_\_\_\_\_ L/min
- Adaptor Size - ☐ 3/4" JIS ☐ Other \_\_\_\_\_
- Adaptor Material - ☐ Welding Type ☐ Male Thread  
☐ Female Thread ☐ Butt-fusion Adaptor  
☐ Other \_\_\_\_\_

- Material  
☐ 1 Body PC ☐ 2 Body PSU  
☐ 3 Body PSU Hastelloy C FloaT, Ti Guide Rod  
☐ 4 Body PSU Hastelloy C Float & Guide Rod
- Other  
Specs besides above listed information \_\_\_\_\_

## F301A- New 270mm large size pipe size 3/4"-1" F301A series



### Product Features · Use

- 4 design innovations to improve usability:  
New body design: Decreases the vibration when working which stabilises flow distribution./ New indicator design: Easily adjustable and positionable./ Thickened threads for caps: Caps are easy to be locked even under bad concentricity./ Models with and without guide rods are able to share the same adaptors.
- Patented dual-indicator design for easy and clear flow range management.
- Laser engraved degree scales provide better readability and longer life.
- Available in customizable units, temperature, and molecular weight.

### Standard Specs

- Model: F301A PSU, F301AH PSU
- Adaptor Size: 1/2", 3/4", 1"
- Applicable Fluid: Gas
- Flow direction: From the bottom up
- Engraved degree scales: Laser engraved degree scales
- Fluid Temperature: 50°C (Standard: UPVC adaptor)  
60°C (PP adaptor)

- Working Pressure: 5.0 kg/cm<sup>2</sup>
- Full Scale Accuracy: ±5% F.S.

### Product Material

Body - PSU  
Float - Stainless 316, Hastelloy C  
Guide Rod - Stainless 316, Hastelloy C  
Guide Rod Bottom - PP  
Adaptor - Welding Type: UPVC  
Male, Female Thread: UPVC, PP  
Butt-fusion Adaptor: PP  
Union Nuts - UPVC  
O-ring - EPDM, VITON

### Adaptor Material

Welding Type, Male Thread, Female Thread,  
Butt-fusion Adaptor

※ BSPT is standard thread type. NPT is available for custom order.

### Scale Range

Product Code	Scale Range ※ 1 ※ 2 (NLPM)
F301A - 400NLPM	40-400 / P
F301A - 500NLPM	50-500 / P
F301A - 700NLPM	70-700 / P
F301A - 1000NLPM	100-1000 / S, H

※ 1. Gas flow meters are calibrated for normal condition. ( 0°C , 1 atm)

※ 2. " / " float material, S- Stainless 316, P- PVC, H- Hastelloy C.

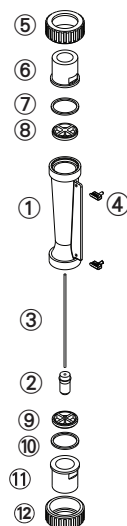
### Maximum working temperature for different adaptor materials

Adaptor Types	Maximum working temperature materials		
	~ 50°C	~ 60°C	~ 100°C
Welding Type	UPVC	-	-
Male / Female Thread	UPVC	PP	-
Butt-fusion Adaptor	-	PP	-

※ When maximum working temperature is over 50°C, the material for guide rod bottom and union nuts have to be PSU and aluminium.

※ If the maximum working temperature requirement of the adaptor is over 60°C, please contact LORRIC directly.

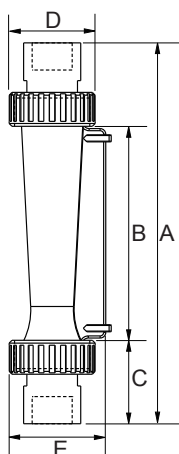
## Parts Material



No.	Series	Material (Main material)*			
		1	2	3	4
1	Body	PSU	PSU	PSU	PSU
2	Float	S316	S316	Hastelloy C	PVC
3	Guide Rod	S316	S316	Ti	Hastelloy C
4	Pointer	PP	PP	PP	PP
5,12	Union Nuts	UPVC	UPVC	UPVC	UPVC
6,11	Adaptor	UPVC	UPVC	UPVC	UPVC
7,10	O-ring	EPDM	VITON	VITON	VITON
8,9	Guide Rod Bottom	PP	PP	PP	PP

※ Material for different parts is optional for each flowmeter.

## Parts Size



Adaptor Material	A	B	C	D	E
1"Male Thread	270	153	58.5	61	69
1"Female Thread	270	153	58.5	61	69
1" JIS	255	153	51	61	69
PP OD33 ID25.2	254	153	50.5	61	69
3/4"Male Thread	256	153	51.5	61	69
3/4" JIS	260	153	53.5	61	69

Unit: mm

## Specification inquiry (F301A)

※ Contact us with below information.

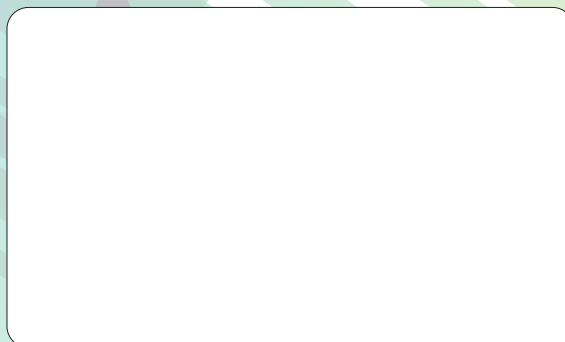
- Fluid - ☐ Gas ☐ Other \_\_\_\_\_
- Specific gravity - ☐ Standard-1.0 ☐ Other \_\_\_\_\_
- Pressure - ☐ Standard-5.0kg/cm<sup>2</sup> ☐ Other \_\_\_\_kg/cm<sup>2</sup>
- Temperature - ☐ Normal temperature ☐ Other \_\_\_\_°C
- Scale Range - \_\_\_\_\_ L/min ~ \_\_\_\_\_ L/min
- Adaptor Size - ☐ 1" JIS ☐ Other \_\_\_\_\_
- Adaptor Material - ☐ Welding Type ☐ Male Thread  
☐ Female Thread ☐ Butt-fusion Adaptor  
☐ Other \_\_\_\_\_

- Material
  - ☐ 1 Body PC ☐ 2 Body PSU
  - ☐ 3 Body PSU Hastelloy C FloaT, Ti Guide Rod
  - ☐ 4 Body PSU Hastelloy C Float & Guide Rod  
Adaptor PSU (for high working temperature)
  - ☐ 5 Other  
Specs besides above listed information \_\_\_\_\_



**LORRIC**  
United Benefit Corp.

8F, No.3, Lane 83, Sec. 1, Guangfu Rd.,  
Sanchong Dist. New Taipei City  
TEL : +886-2-8511-2135  
FAX : +886-2-8511-2097  
E-mail : sales@lorric.com  
**www.lorric.com**



LORRIC Nozzle Product Catalogue 2018. September

