

ST Plastic hollow cone nozzle for cooling

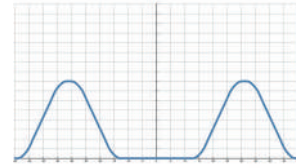


- Recommended working pressure: 0.1 kgf/cm²
- Flowrate tolerance: ± 10% @ 0.1 ± 0.05 kgf/cm²

【Top view of nozzle spray pattern】



【Flow distribution】



Features

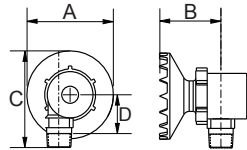
- Spray patterns: Hollow Cone. Spray shape is circular (Circular Impact).
- Shark teeth design provides more liquid surface for better cooling performance. No complicated structure in the nozzle flow path provides the maximum free passage of 40mm which effectively avoids clogging.
- Two piece nozzle design enables easy cleaning and

installation.

- The minimum operating pressure can be reduced to 0.05kgf/cm².

Applications

- Cleaning: Gas, cleaning, etc.
- Cooling: Gas, liquid cooling, etc.



Material	Serie	Unit (mm)				Thread Type	Weight (g) FRPP
		A	B	C	D		
Plastic	1-1/2ST	165	175	119	26	1-1/2M	376

Appearance dimensions may vary depending on model, material. Please ask for details.

Material

- Strengthened Fiberglass PP(FRPP)

How to place an order for LORRIC nozzles?

Example: 1-1/2 BSPT ST 120 - FRPP

↑ ↑ ↑ ↑ ↑ ↑

Thread Size Thread Type Capacity Code Capacity Code Spray Angle Material

※ Standard Pressure: Column in red.

Spray Angle	Capacity Code	Thread Size	Capacity at Pressure									Average particle size (um)	Min. Free Passage (mm)	Filter mesh
			0.05 kgf/cm ²	0.07 kgf/cm ²	0.1 kgf/cm ²	0.2 kgf/cm ²	0.3 kgf/cm ²	0.5 kgf/cm ²	0.7 kgf/cm ²	1 kgf/cm ²	2 kgf/cm ²			
-	120	v	84.85	100	120	169	207	268	317	379	536	-	-	-
	122	v	86.3	102	122	172	211	272	322	385	545	-	-	-
	147	v	104	122	147	207	254	328	388	464	657	-	-	-

※ For MPa / bar / psi units, please refer to <https://www.lorric.com/>.