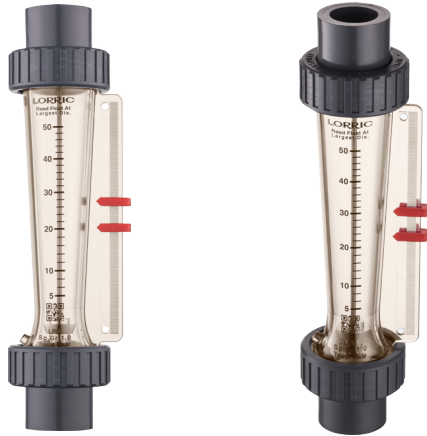


F301A- New 270mm large size pipe size 3/4"-1" **F301A series**



**Product Features · Use**

- 4 design innovations to improve usability:  
New body design: Decreases the vibration when working which stabilises flow distribution./ New indicator design: Easily adjustable and positionable./ Thickened threads for caps: Caps are easy to be locked even under bad concentricity./ Models with and without guide rods are able to share the same adaptors.
- Patented dual-indicator design for easy and clear flow range management.
- Laser engraved degree scales provide better readability and longer life.
- Available in customizable units, temperature, and molecular weight.

**Standard Specs**

- Model: F301A PSU, F301AH PSU
- Adaptor Size: 3/4", 1"
- Applicable Fluid: Gas
- Flow direction: From the bottom up
- Engraved degree scales: Laser engraved degree scales
- Fluid Temperature: 50°C (Standard: UPVC adaptor)  
60°C (PP adaptor)

- Working Pressure: 5.0 kg/cm<sup>2</sup>
- Full Scale Accuracy: ±5% F.S.
- Product Material

Body - PSU  
 Float - Stainless 316, Hastelloy C  
 Guide Rod - Stainless 316, Hastelloy C  
 Guide Rod Bottom - PP  
 Adaptor - Welding Type: UPVC  
 Male, Female Thread: UPVC, PP  
 Butt-fusion Adaptor: PP

Union Nuts - UPVC  
 O-ring - EPDM, VITON

- Adaptor Material
- Welding Type, Male Thread, Female Thread,  
 Butt-fusion Adaptor

※ BSPT is standard thread type. NPT is available for custom order.

**Scale Range**

Product Code	Scale Range ※ 1 ※ 2 (NLPM)
F301A - 400NLPM	40-400 / P
F301A - 500NLPM	50-500 / P
F301A - 700NLPM	70-700 / P
F301A - 1000NLPM	100-1000 / S, H

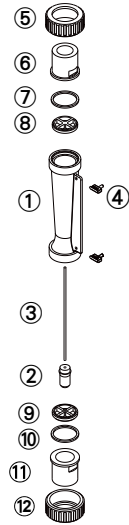
※ 1. Gas flow meters are calibrated for normal condition. ( 0°C , 1 atm)  
 ※ 2. " / "float material, S- Stainless 316, P- PVC, H- Hastelloy C.

**Maximum working temperature for different adaptor materials**

Adaptor Types	Maximum working temperature materials		
	~ 50°C	~ 60°C	~ 100°C
Welding Type	UPVC	-	-
Male / Female Thread	UPVC	PP	-
Butt-fusion Adaptor	-	PP	-

※ When maximum working temperature is over 50°C, the material for guide rod bottom and union nuts have to be PSU and aluminium.  
 ※ If the maximum working temperature requirement of the adapter is over 60°C, please contact LORRIC directly.

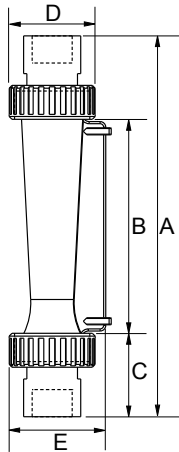
### Parts Material



No.	Series	Material (Main material)*			
		1	2	3	4
1	Body	PSU	PSU	PSU	PSU
2	Float	S316	S316	Hastelloy C	PVC
3	Guide Rod	S316	S316	Ti	Hastelloy C
4	Pointer	PP	PP	PP	PP
5,12	Union Nuts	UPVC	UPVC	UPVC	UPVC
6,11	Adaptor	UPVC	UPVC	UPVC	UPVC
7,10	O-ring	EPDM	VITON	VITON	VITON
8,9	Guide Rod Bottom	PP	PP	PP	PP

\* Material for different parts is optional for each flowmeter.

### Parts Size



Adaptor Material	A	B	C	D	E
1" Male Thread	270	153	58.5	61	69
1" Female Thread	270	153	58.5	61	69
1" JIS	255	153	51	61	69
PP OD33 ID25.2	254	153	50.5	61	69
3/4" Male Thread	256	153	51.5	61	69
3/4" JIS	260	153	53.5	61	69

Unit: mm

### Specification inquiry (F301A)

\* Contact us with below information.

- Fluid -  Gas  Other \_\_\_\_\_
- Specific gravity -  Standard-1.0  Other \_\_\_\_\_
- Pressure -  Standard-5.0kg/cm<sup>2</sup>  Other \_\_\_ kg/cm<sup>2</sup>
- Temperature -  Normal temperature  Other \_\_\_ °C
- Scale Range - \_\_\_\_\_ L/min ~ \_\_\_\_\_ L/min
- Adaptor Size -  1" JIS  Other \_\_\_\_\_
- Adaptor Material -  Welding Type  Male Thread  
 Female Thread  Butt-fusion Adaptor  
 Other \_\_\_\_\_

- Material
  - 1 Body PC  2 Body PSU
  - 3 Body PSU Hastelloy C FloaT, Ti Guide Rod
  - 4 Body PSU Hastelloy C Float & Guide Rod  
Adaptor PSU (for high working temperature)
  - 5 Other  
Specs besides above listed information \_\_\_\_\_