

## KG Metal full cone nozzle

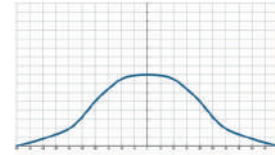


- Recommended working pressure: 2.0 kgf/cm<sup>2</sup>
- Flowrate tolerance:  $\pm 5\%$  @ 2.0  $\pm$  0.1 kgf/cm<sup>2</sup>
- Angle tolerance:  $\pm 5^\circ$  @ 2.0  $\pm$  0.1 kgf/cm<sup>2</sup>

【 Top view of nozzle spray pattern 】



【 Flow distribution 】

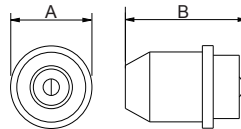


### Features

- Full cone spray.
- Unibody design allows for secure and easy installation, and X-shaped core provides minimal clogging.

### Applications

- Cleaning: Gas, exhaust gas, dust, cleaners, etc.
- Cooling: Gas, tank, machinery, metal, etc.
- Dispersion: Humidifying, fire fighting, and dust suppression.



Appearance dimensions may vary depending on model, material. Please ask for details.

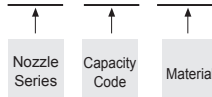
Material	Serie	Unit (mm)		Thread Type	Weight (g)		
		A	B		S303	S316	Brass
Metal	1/8KG	21	45	1/8M			
	1/4KG	21	47	1/4M	10.4	10.6	11.5
	3/8KG	21	47	3/8M			

### Material

- Metal: Stainless 303, Stainless 316, BRASS

#### How to place an order for LORRIC nozzles?

Example: **KG** **10** **BRASS**



※ Standard Pressure: Column in red.  
 ※ This product for spray angle 90° and 120° is able to be made to order.

Spray Angle	Capacity Code	Capacity at Pressure (lpm)									Average particle size (um)	Min. Free Passage (mm)	Filter mesh
		0.5 kgf/cm <sup>2</sup>	0.7 kgf/cm <sup>2</sup>	1 kgf/cm <sup>2</sup>	1.5 kgf/cm <sup>2</sup>	2 kgf/cm <sup>2</sup>	2.5 kgf/cm <sup>2</sup>	3 kgf/cm <sup>2</sup>	5 kgf/cm <sup>2</sup>	10 kgf/cm <sup>2</sup>			
70°	10	3.10	3.67	4.38	5.37	6.20	6.93	7.59	9.80	13.86	-	1.7	-

※ For MPa / bar / psi units, please refer to <https://www.lorric.com/>.