

MWT Metal hollow cone nozzle

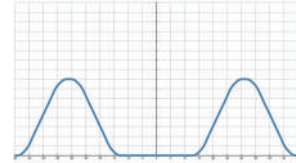


- Recommended working pressure: 2.0 kgf/cm²
- Flowrate tolerance: ± 5% @ 2.0 ± 0.1 kgf/cm²
- Angle tolerance: ± 5° @ 2.0 ± 0.1 kgf/cm²

【 Top view of nozzle spray pattern 】



【 Flow distribution 】



Features

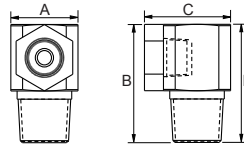
- Spray patterns: Hollow Cone. The shape of the spray is circular (circular Impact).
- The nozzle flow path has no complicated structure and effectively prevents foreign matter from being blocked.
- Two piece nozzle design enables easy clean and installation.
- The direction of the spray is 90 degrees to the mounting direction. Please confirm that the installation environment

meets the requirements.

- Under the same test conditions, the hollow cone spray has the smallest particle size, so it is commonly used in gas scrubbing and dust suppression applications.

Applications

- Cleaning: Gas cleaning etc.
- Cooling: Gas, liquid, air conditioning, machinery, metal, plastic molding cooling process.
- Dispersion: Humidifying, aeration, firefighting, dedusting, deodorization, etc.



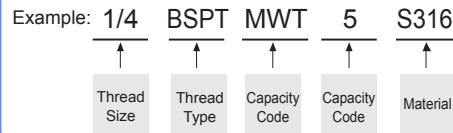
Appearance dimensions may vary depending on model, material. Please ask for details.

Material	Serie	Unit (mm)				Thread Type	Weight (g)	
		A	B	C	D		S303	S316
Plastic	1/8MWT	13	22	15	16	1/8M	-	-
	1/4MWT	16	29	18	21	1/4M	39	39.5
	3/8MWT	19	35	20	24	3/8M	-	-

Material

- Metal: Stainless 303, Stainless 316

How to place an order for LORRIC nozzles?



※ Standard Pressure: Column in red.

Spray Angle	Capacity Code	Capacity at Pressure									Average particle size (um)	Min. Free Passage (mm)	Filter mesh
		0.7 kgf/cm ²	1 kgf/cm ²	1.5 kgf/cm ²	2 kgf/cm ²	4 kgf/cm ²	6 kgf/cm ²	8 kgf/cm ²	10 kgf/cm ²	15 kgf/cm ²			
60°	3	1.77	2.12	2.60	3.00	4.24	5.20	6.00	6.71	8.22	230	3	-
	5	2.96	3.54	4.33	5.00	7.07	8.66	10.00	11.18	13.69		4	-

※ For MPa / bar / psi units, please refer to <https://www.lorric.com/>.