

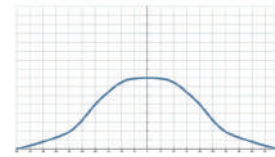
KH Plastic clog-resistant full cone nozzle



【 Top view of nozzle spray pattern 】



【 Flow distribution 】



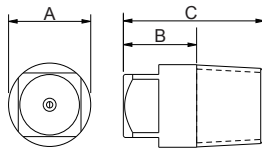
- Recommended working pressure: 2.0 kgf/cm²
- Flowrate tolerance: ± 10% @ 2.0 ± 0.1 kgf/cm²
- Angle tolerance: ± 10° @ 2.0 ± 0.1 kgf/cm²

Features

- Full cone spray.
- Unibody design allows for secure and easy installation, and X-shaped core provides minimal clogging.
- One piece body with removable core for easy cleaning and maintenance.

Applications

- Cleaning: Gas, exhaust gas, dust, cleaning device, tank cleaning, etc.
- Cooling: Gas, tank, machinery, metal, roof, etc.
- Dispersion: humidifying, chemicals, firefighting, dust suppression, aeration, defoaming, sewage treatment.



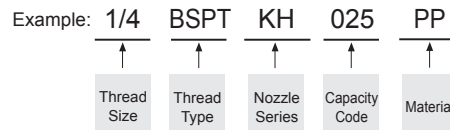
Appearance dimensions may vary depending on model, material. Please ask for details.

Material	Serie	Unit (mm)			Thread Type	Weight (g) PP
		A	B	C		
PP	1/8KH	12	10	19	1/8M	1.0
	1/4KH	15	11	21	1/4M	1.8
	3/8KH	16	13	25	3/8M	3.0

Material

- Nozzle: PP
- Core: PP, Strengthened Fiberglass PP(FRPP)

How to place an order for LORRIC nozzles?



※ Standard Pressure: Column in red.
 ※ This product for spray angle 90° and 120° is able to be made to order.

Spray Angle	Capacity Code	Thread Size			Capacity at Pressure									Average particle size (um)	Min. Free Passage (mm)	Filter mesh	
		1/8	1/4	3/8	0.7 kgf/cm ²	1 kgf/cm ²	1.5 kgf/cm ²	2 kgf/cm ²	4 kgf/cm ²	6 kgf/cm ²	8 kgf/cm ²	10 kgf/cm ²	15 kgf/cm ²				
50°	010	V	V		0.59	0.71	0.87	1.00	1.41	1.73	2.00	2.24	2.74	230	0.7	100	
	015	V	V		0.89	1.06	1.30	1.50	2.12	2.60	3.00	3.35	4.11		270	1	-
	020	V	V		1.18	1.41	1.73	2.00	2.83	3.46	4.00	4.47	5.48			400	1.3
	025	V	V		1.48	1.77	2.17	2.50	3.54	4.33	5.00	5.59	6.85	2			1.4
	030	V	V		1.77	2.12	2.60	3.00	4.24	5.20	6.00	6.71	8.22		2		1.5
	035	V	V		2.07	2.47	3.03	3.50	4.95	6.06	7.00	7.83	9.59			2	1.6
	040	V	V		2.37	2.83	3.46	4.00	5.66	6.93	8.00	8.94	10.95	2			1.7
	050		V	V	2.96	3.54	4.33	5.00	7.07	8.66	10.00	11.18	13.69		2		1.7
	060		V	V	3.55	4.24	5.20	6.00	8.49	10.39	12.00	13.42	16.43			2	1.7
	070		V	V	4.14	4.95	6.06	7.00	9.90	12.12	14.00	15.65	19.17	2			1.9
	080		V	V	4.73	5.66	6.93	8.00	11.31	13.86	16.00	17.89	21.91		2		1.9
	100			V	5.92	7.07	8.66	10.00	14.14	17.32	20.00	22.36	27.39			2	2
120			V	7.10	8.49	10.39	12.00	16.97	20.78	24.00	26.83	32.86	2	2.1			-
95°	140			V	8.28	9.90	12.12	14.00	19.80	24.25	28.00	31.30		38.34	640		2.5

※ For MPa / bar / psi units, please refer to <https://www.lorric.com/>.