

# CHEMSAFE CHEMICAL PUMPS

## IDEAL FOR THE MOST CHALLENGING FLUIDS

100% PTFE corrosion-resistant fluid paths, ChemSafe pumps are configured to meet most, temperature and chemical compatibility requirements.

### LEAK-FREE TECHNOLOGY FOR EASE OF USE

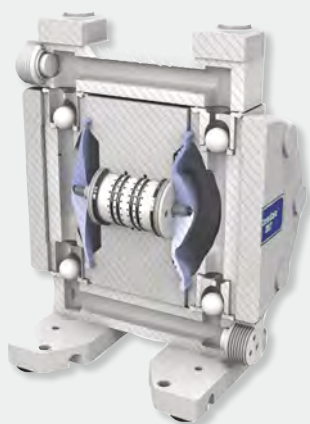
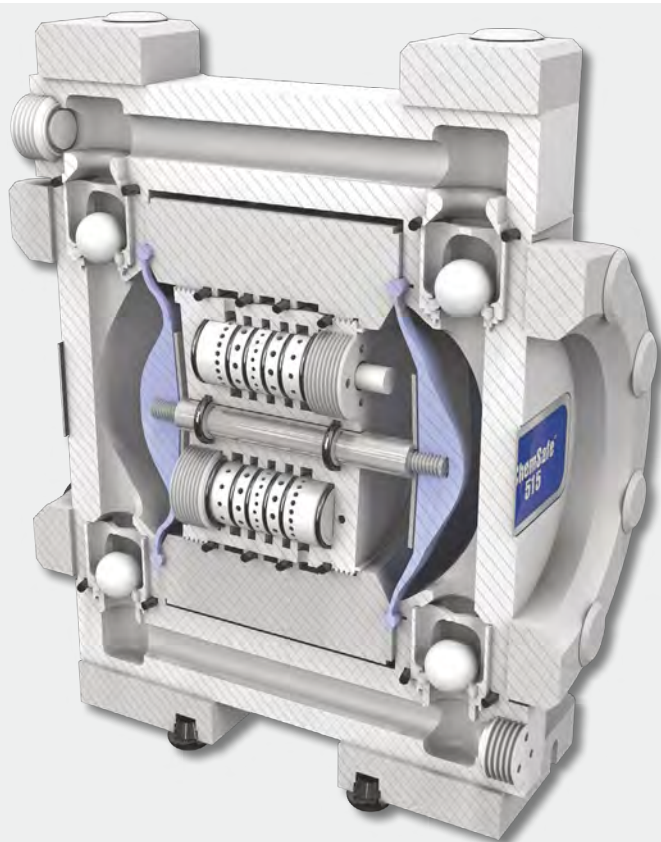
- Dual force, tie-bolt design ensures chemical containment and reduces cold flow
- Machined fluid components

### CORROSION-RESISTANT DESIGN

- 100% PTFE fluid paths
- No exposed metals

### USER-FRIENDLY PARALLEL PILOT SHIFTING

- Easy to maintain
- Stall-free design
- Reduced icing air system



PUMP SIZE	Max. Flow Rate	Max. Fluid Pressure	Connection Size	Max. Pumpable Solids
<b>205</b>	2.5 gpm (9.5 lpm)	100 psi (7 bar, 0.7 MPa)	1/4 in.	0.06 in. (1.5 mm)
<b>307</b>	6.7 gpm (25.4 lpm)	100 psi (7 bar, 0.7 MPa)	3/8 in.	0.08 in. (2 mm)
<b>515</b>	16 gpm (60.6 lpm)	100 psi (7 bar, 0.7 MPa)	1/2 in.	0.16 in. (4 mm)
<b>1040</b>	39 gpm (146 lpm)	100 psi (7 bar, 0.7 MPa)	1 in.	0.24 in. (6 mm)
<b>1590</b>	99.5 gpm (376 lpm)	100 psi (7 bar, 0.7 MPa)	1.5 in.	0.32 in. (8 mm)