

F34Series - 270mm large size pipe size 1/2"-1" F34 series



Product Features · Use

- Designed for use with highly corrosive solutions.
- Equipped with an inductor, which confirms the pipeline's current capacity by means of detecting the floating migration. The inductor can be connected instruments or computers and is often used as part of the control or alarm system.
- Patented dual-indicator design for easy and clear flow range management.
- Laser engraved degree scales provide better readability and longer life.
- Available in customizable units, temperature, and molecular weight.
- Each batch of flow meters will be calibrated before delivery for our best precision guarantee.

Standard Specs

- Model: F34 PSU, F34 w/ Inductor PSU
- Adaptor Size: 1/2", 3/4", 1"
- Applicable Fluid: Liquid (Highly corrosive)
- Flow direction: From the bottom up
- Engraved degree scales: Laser engraved degree scales
- Fluid Temperature: 50°C (Standard: UPVC adaptor)  
60°C (PP adaptor)
- Working Pressure: 6.0 kg/cm<sup>2</sup>
- Full Scale Accuracy: ±5% F.S.
- Product Material \_\_\_\_\_  
 Body - PSU  
 Float - PP  
 Guide Rod - No  
 Guide Rod Bottom - PP  
 Adaptor - Welding Type: UPVC  
                     Male, Female Thread: UPVC, PP  
                     Butt-fusion Adaptor: PP  
 Union Nuts - UPVC  
 O-ring - EPDM, VITON
- Adaptor Material \_\_\_\_\_  
 Welding Type, Male Thread, Female Thread,  
 Butt-fusion Adaptor

※ BSPT is standard thread type. NPT is available for custom

Scale Range

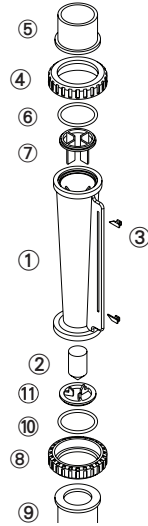
Product Code	Scale Range※	Standard gravity
F34 - 20LPM	2.0-20 L/min	1.0
F34 - 30LPM	3.0-30 L/min	1.0
F34 - 50LPM	5.0-50 L/min	1.0
F34 - 60LPM	6.0-60 L/min	1.0
F34 - 80LPM	8.0-80 L/min	1.0
F34 - 100LPM	10-100 L/min	1.0
F34 w/ Inductor - 20LPM	2.0-20 L/min	1.0
F34 w/ Inductor - 30LPM	3.0-30 L/min	1.0
F34 w/ Inductor - 60LPM	6.0-60 L/min	1.0
F34 w/ Inductor - 100LPM	10-100 L/min	1.0※2

※ Liquid flow meters are calibrated for 20°C water.  
 ※ Please contact our sales before ordering F34 w/ Inductor - 100LPM (unstandardized items.)

Maximum working temperature for different adaptor materials

Adaptor Types	Maximum working temperature materials	
	~ 50°C	~ 60°C
Welding Type	UPVC	-
Male / Female Thread	UPVC	PP
Butt-fusion Adaptor	PP	PP
Panel Elbow Male Thread	UPVC	-

## Parts Material



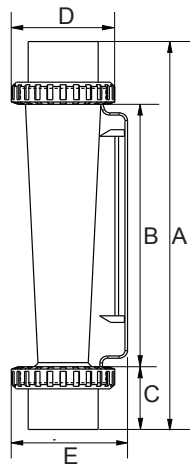
No.	Series	Material (Main material)* 1			
		1	2	3	4
1	Body	PSU	PSU	PSU	PSU
2	Float	PP	PP	PP	PP
3	Guide Rod	ABS	ABS	ABS	ABS
4,8	Pointer	UPVC	UPVC	UPVC	UPVC
5,9	Adaptor	UPVC	UPVC	PP** 2	PSU** 3
6,10	O-ring	EPDM	VITON	VITON	VITON

※ 1. Material for different parts is optional for each flowmeter.

※ 2. For thread and welding adaptor only.

※ 3. For thread adaptor only.

## Parts Size



Adaptor Spec	A	B	C	D	E
1"Male Thread	270	171	49.5	60	68
1"Female Thread	270	171	49.5	60	68
1"CNS	257	171	43	60	68
1"ASTM	257	171	43	60	68
1"JIS	255	171	42	60	68
3/4"Male Thread	256	171	42.5	60	68
3/4"Female Thread	271	171	50	60	68
3/4"CNS	259	171	44	60	68
3/4"ASTM	253	171	41	60	68
3/4"JIS	260	171	44.5	60	68
3/4"DIN	259	171	44	60	68
3/4"DIN Thickness Of Pipe Wall	255	171	42	60	68
3/4"JIS MAX	252	171	40.5	60	68
1/2"ASTM	251	171	40	60	68
1/2"JIS	249	171	39	60	68
1/2"DIN	249	171	39	60	68
PP OD40.4 ID34	257	171	43	60	68
PP OD33 ID25.2	253	171	41	60	68

Unit: mm

## Specification inquiry (F34)

※ Contact us with below information.

- Fluid - \_\_\_\_\_
- Specific gravity -  Standard-1.0  Other \_\_\_\_\_
- Pressure -  Standard-6.0kg/cm<sup>2</sup>  Other \_\_\_ kg/cm<sup>2</sup>
- Temperature -  Normal temperature  Other \_\_\_ °C
- Scale Range - \_\_\_\_\_ L/min ~ \_\_\_\_\_ L/min
- Adaptor Size -  1" JIS  
 Other \_\_\_\_\_
- Adaptor Material
  - Welding Type  Male Thread
  - Female Thread  Butt-fusion Adaptor
  - Panel Elbow Thread  Other \_\_\_\_\_
- Inductor -  Yes  No
- Other - \_\_\_\_\_