

F201A- New 192mm middle size pipe size 1/2"-3/4" F201A series



Product Features · Use

- 4 design innovations to improve usability:
New body design: Decreases the vibration when working which stabilises flow distribution./ New indicator design: Easily adjustable and positionable./ Thickened threads for caps: Caps are easy to be locked even under bad concentricity./ Models with and without guide rods are able to share the same adaptors.
- Patented dual-indicator design for easy and clear flow range management.
- Laser engraved degree scales provide better readability and longer life.
- Available in customizable units, temperature, and molecular weight.

Standard Specs

- Model: F201APSU, F201AH PSU
- Adaptor Size: 1/2", 3/4"
- Applicable Fluid: Gas
- Flow direction: From the bottom up
- Engraved degree scales: Laser engraved degree scales
- Fluid Temperature: 50°C (Standard: UPVC adaptor)
60°C (PP adaptor)

- Working Pressure: 5.0kg/cm²
- Full Scale Accuracy: ±5% F.S.

Product Material

Body - PSU
 Float - Stainless 316, Hastelloy C, PVC
 Guide Rod - Stainless 316, Ti, Hastelloy C
 Guide Rod Bottom - PP
 Adaptor - Welding Type: UPVC
 Male, Female Thread: UPVC, PP
 Butt-fusion Adaptor: PP

Union Nuts - UPVC
 O-ring - EPDM, VITON

Adaptor Material

Welding Type, Male Thread, Female Thread,
 Butt-fusion Adaptor

※ BSPT is standard thread type. NPT is available for custom order.

Scale Range

Product Code	Scale Range ※ 1※ 2 (NLPM)
F201A-30NLPM	3.0-30 / P
F201A-50NLPM	5.0-50 / P
F201A-100NLPM	10-100 / P
F201A-350NLPM	35-350 / S, H
F201A-500NLPM	50-500 / S, H
F201A-1000NLPM	100-1000 / S, H

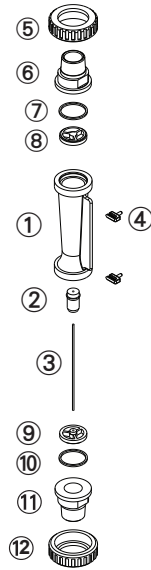
※ 1. Gas flow meters are calibrate for normal condition. (0°C , 1 atm)
 ※ 2. / "float material, S- Stainless 316, P- PVC, H- Hastelloy C.

Maximum working temperature for different adaptor materials

Adaptor Types	Maximum working temperature materials		
	~ 50°C	~ 60°C	~ 100°C
Welding Type	UPVC	-	-
Male / Female Thread	UPVC	PP	-
Butt-fusion Adaptor	-	PP	-

※ When maximum working temperature is over 50°C, the material for guide rod bottom and union nuts have to be PSU and aluminium.
 ※ If the maximum working temperature requirement of the adaptor is over 60°C, please contact LORRIC directly.

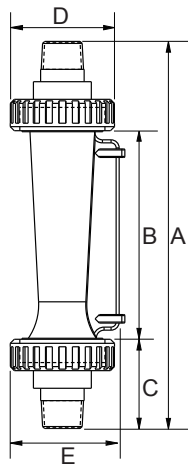
Parts Material



No.	Series	Material (Main material)*			
		1	2	3	4
1	Body	PC	PSU	PSU	PSU
2	Float	S316	S316	Hastelloy C	PVC
3	Guide Rod	S316	S316	Ti	Hastelloy C
4	Pointer	PP	PP	PP	PP
5,12	Union Nuts	UPVC	UPVC	UPVC	UPVC
6,11	Adaptor	UPVC	UPVC	UPVC	UPVC
7,10	O-ring	EPDM	VITON	VITON	VITON
8,9	Guide Rod Bottom	PP	PP	PP	PP

* Material for different parts is optional for each flowmeter.

Parts Size



Adaptor Spec	A	B	C	D	E
3/4" Male Thread	192	102	45	51	56
3/4" CNS	194	102	46	51	56
3/4" ASTM	195	102	46.5	51	56
3/4" JIS	194	102	46	51	56
3/4" DIN	195	102	46.5	51	56
1/2" Male Thread	182	102	40	51	56
1/2" Female Thread	192	102	45	51	56
1/2" PP Female Thread	192	102	45	51	56
1/2" CNS	184	102	41	51	56
1/2" ASTM	184	102	41	51	56
1/2" JIS	184	102	41	51	56
1/2" DIN	187	102	42.5	51	56
PP OD20 ID15.3	192	102	41	51	56.5

Unit: mm

Specification inquiry (F201A)

* Contact us with below information.

- Fluid - Gas Other _____
- Specific gravity - Standard-1.0 Other _____
- Pressure - Standard-5.0kg/cm² Other ___ kg/cm²
- Temperature - Normal temperature Other ___ °C
- Scale Range - _____ L/min ~ _____ L/min
- Adaptor Size - 3/4" JIS Other _____
- Adaptor Material - Welding Type Male Thread
 Female Thread Butt-fusion Adaptor
 Other _____

- Material
 1 Body PC 2 Body PSU
 3 Body PSU Hastelloy C FloaT, Ti Guide Rod
 4 Body PSU Hastelloy C Float & Guide Rod
- Other
 Specs besides above listed information _____