

# DVEH Easy maintenance plastic flat fan nozzle

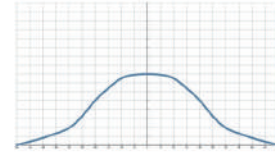


- Flowrate tolerance:  $\pm 5\%$  @  $2.0 \pm 0.1 \text{ kgf/cm}^2$
- Angle tolerance:  $\pm 5^\circ$  @  $2.0 \pm 0.1 \text{ kgf/cm}^2$
- Jet angle tolerance:  $3^\circ$

【 Top view of nozzle spray pattern 】



【 Flow distribution 】

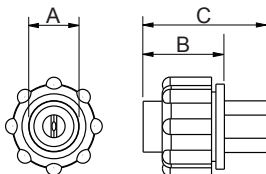


## Features

- The spraying type is fan type, and the spray shape is single line and two sides are tapered (tapered edge), which presents a bell curve shape flow field distribution with weaker ends compared to the middle.
- Multi-piece structure, easy maintenance, cleaning and replacement, and can save the cost of replacing the nozzle head.
- The special positioning design of the nozzle and base installation ensures that each nozzle can be replaced and returned to the original position.
- No internal gasket design to avoid possible water leakage or contamination of the gasket.
- PVDF is resistant to temperature and corrosive chemical solutions.

## Applications

- Cleaning: Vehicles, Containers, Filters, Dust, Gravel, Metals, Metal Parts, Machinery, Steel Plates, Various Containers, etc.
- Cooling: Gas, tank, machinery, metal, roof, etc.
- Dispersion: Humidifying, chemicals (eg. etching solution, developer, insect repellent, etc.), firefighting, dedust, deodorization, etc.
- Printed circuit board: etching process, developing process, water washing process.



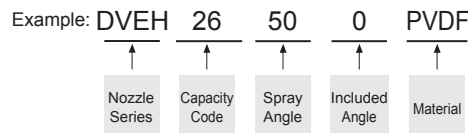
Appearance dimensions may vary depending on model, material. Please ask for details.

Material	Serie	Unit (mm)			Thread Type	Weight (g)
		A	B	C		
Plastic	DVEH	48	20	31	-	28.2

## Material

- Tip: PVDF
- Body: U-PVC
- Clap: PP

### How to place an order for LORRIC nozzles?



※ Standard Pressure: Column in red.

Spray Angle	Capacity Code	Capacity at Pressure									Average particle size (um)	Min. Free Passage (mm)	Filter mesh
		0.7 kgf/cm <sup>2</sup>	1 kgf/cm <sup>2</sup>	1.5 kgf/cm <sup>2</sup>	2 kgf/cm <sup>2</sup>	3 kgf/cm <sup>2</sup>	4 kgf/cm <sup>2</sup>	5 kgf/cm <sup>2</sup>	6 kgf/cm <sup>2</sup>	8 kgf/cm <sup>2</sup>			
50°	15	0.89	1.06	1.30	1.50	1.84	2.12	2.37	2.60	3.00	-	0.9	50
	26	1.54	1.84	2.25	2.60	3.18	3.68	4.11	4.50	5.20	-	1.1	-
80°	12	0.71	0.85	1.04	1.20	1.47	1.70	1.90	2.08	2.40	-	0.7	100

※ For MPa / bar / psi units, please refer to <https://www.lorric.com/>.