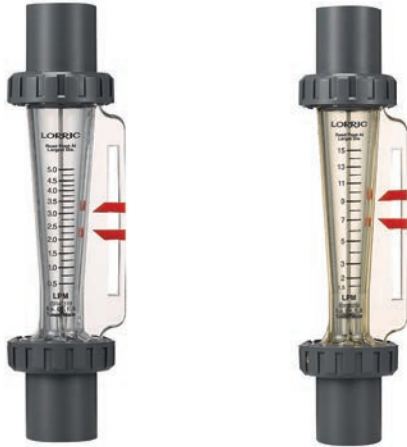


F10Series - 168mm small size pipe size 1/2" F10 series

This product will stop production by December 31st, 2018.



Product Features · Use

- Patented dual-indicator design for easy and clear flow range management.
- Laser engraved degree scales provide better readability and longer life.
- Available in customizable units, temperature, and molecular weight.
- Each batch of flow meters will be calibrated before delivery for our best precision guarantee.
- Perpendicular joint is available for space saving installation.
- Hastelloy float is available for corrosive environment.

Standard Specs

- Model: F10PC, F10PSU, F10H PSU
- Adaptor Size: 1/2"
- Applicable Fluid: Liquid
- Flow direction: From the bottom up
- Fluid Temperature: 50°C (standard)
- Working Pressure: 6.0 kg/cm<sup>2</sup> MAX
- Full Scale Accuracy: ±5% F.S.
- Product Material

Body - PC, PSU  
 Float - Stainless 316, Ti, Hastelloy C  
 Guide Rod - Stainless 316, Ti, Hastelloy C  
 Guide Rod Bottom - PP, PSU  
 Adaptor - Welding Type: UPVC  
     Male, Female Thread: UPVC, PP, PVDF  
     Butt-fusion Adaptor: PP  
     Panel Elbow Male Thread: UPVC

- Union Nuts - UPVC, Aluminum
- O -ring - EPDM, VITON
- Adaptor Material
- Welding Type, Male Thread, Female Thread,  
 Butt-fusion Adaptor, Panel Elbow Male Thread

※ BSPT is standard thread type. NPT is available for custom order.

Scale Range

| Product Code              | Scale Range※  | Standard gravity |
|---------------------------|---------------|------------------|
| F10 (PC,PSU,H PSU) -2LPM  | 0.2-2.0 L/min | 1.0              |
| F10 (PC,PSU,H PSU) -4LPM  | 0.4-4.0 L/min | 1.0              |
| F10 (PC,PSU,H PSU) -5LPM  | 0.5-5.0 L/min | 1.0              |
| F10 (PC,PSU,H PSU) -10LPM | 1.0-10 L/min  | 1.0              |
| F10 (PC,PSU,H PSU) -15LPM | 1.5-15 L/min  | 1.0              |
| F10 (PC,PSU,H PSU) -20LPM | 2.0-20 L/min  | 1.0              |

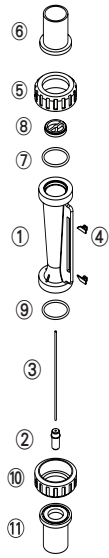
※ Liquid flow meters are calibrated for 20°C water.

Maximum working temperature for different adaptor materials

| Adaptor Types           | Maximum working temperature materials |        |         |
|-------------------------|---------------------------------------|--------|---------|
|                         | ~ 50°C                                | ~ 60°C | ~ 100°C |
| Welding Type            | UPVC                                  | -      | -       |
| Male / Female Thread    | UPVC                                  | PP     | PSU     |
| Butt-fusion Adaptor     | PP                                    | PP     | -       |
| Panel Elbow Male Thread | UPVC                                  | -      | -       |

※ When maximum working temperature is over 50°C, the material for guide rod bottom and union nuts have to be PSU and aluminium.

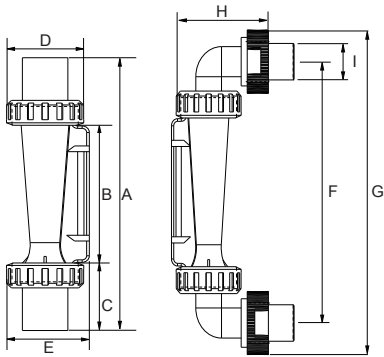
## Parts Material



| No.  | Series           | Material (Main material)* |       |             |             |
|------|------------------|---------------------------|-------|-------------|-------------|
|      |                  | 1                         | 2     | 3           | 4           |
| 1    | Body             | PC                        | PC    | PSU         | PSU         |
| 2    | Float            | S316                      | S316  | Hastelloy C | Hastelloy C |
| 3    | Guide Rod        | S316                      | S316  | Ti          | Hastelloy C |
| 4    | Pointer          | ABS                       | ABS   | ABS         | ABS         |
| 5,10 | Union Nuts       | UPVC                      | UPVC  | UPVC        | Aluminum    |
| 6,11 | Adaptor          | UPVC                      | UPVC  | UPVC        | UPVC        |
| 7,9  | O-ring           | EPDM                      | VITON | VITON       | VITON       |
| 8    | Guide Rod Bottom | UPVC                      | UPVC  | PSU         | PSU         |

\* Material for different parts is optional for each flowmeter.

## Parts Size



| Adaptor Material                | A   | B  | C    | D  | E  | F   | G   | H  | I  |
|---------------------------------|-----|----|------|----|----|-----|-----|----|----|
| 1/2" Female Thread              | 163 | 88 | 37.5 | 41 | 48 | -   | -   | -  | -  |
| 1/2" Male Thread                | 164 | 88 | 38   | 41 | 48 | -   | -   | -  | -  |
| 1/2" JIS                        | 166 | 88 | 39   | 41 | 48 | -   | -   | -  | -  |
| PP OD25 ID20                    | 166 | 88 | 39   | 41 | 48 | -   | -   | -  | -  |
| PP OD27.65 ID18.93              | 168 | 88 | 40   | 41 | 48 | -   | -   | -  | -  |
| 1/2" PT Panel Elbow Male Thread | -   | 88 | -    | 41 | 45 | 153 | 189 | 47 | 22 |

Unit: mm

## Specification inquiry (F10)

\* Contact us with below information.

- Fluid -  Water  Other \_\_\_\_\_
- Specific gravity -  Standard-1.0  Other \_\_\_\_\_
- Pressure -  Standard-6.0kg/cm<sup>2</sup>  Other \_\_ kg/cm<sup>2</sup>
- Temperature -  Normal temperature  Other \_\_\_\_ °C
- Scale Range - \_\_\_\_\_ L/min ~ \_\_\_\_\_ L/min
- Adaptor Size -  3/4" JIS  Other \_\_\_\_\_
- Adaptor Material -  Welding Type  Male Thread
  - Female Thread  Butt-fusion Adaptor
  - Panel Elbow Thread  Other \_\_\_\_\_

- Material
  - 1 Body PC  2 Body PSU
  - 3 Body PSU Hastelloy C Float, Ti Guide Rod
  - 4 Body PSU Hastelloy C Float & Guide Rod Adaptor PSU (for high working temperature)
  - 5 Other
 Specs besides above listed information \_\_\_\_\_